

KENTUCKY HIGH SCHOOL ATHLETIC ASSOCIATION 2011 STATE SOCCER TOURNAMENT INSTRUCTIONS



INSTRUCTIONS FOR PARTICIPATING TEAMS

KHSAA
2280 Executive Drive
Lexington, KY 40505
(859) 299-5472 (859) 293-5999 (fax)
www.khsaa.org



To: Sectional Tournament Winners

From: Assistant Commissioner Michael Barren

Date: October 28, 2011

Re: Congratulations on winning your Sectional Tournament.

Let me take this opportunity to congratulate your school for advancing to the State Tournament. In this manual, you will find a list of instructions for the participating teams in the State Soccer Tournament at Paul Laurence Dunbar in Lexington.

The Boys' semi-finals will be played on Wednesday, November 2, 2011, at 6:00 p.m. and 8:00 p.m. (EST). The Girls' semi-finals will be played on Thursday, November 3, 2011, at 6:00 p.m. and 8:00 p.m. (EST).

The finals will be played on Saturday night, November 5, 2011. The Boys' finals will be at 5:00 p.m. and the Girls' Finals will be at 7:00 p.m. All games will be played at Paul Laurence Dunbar in Lexington.



October 28, 2011

THE INSTRUCTIONS GIVEN ON THESE PAGES ARE VERY IMPORTANT. PLEASE READ THIS INFORMATION IMMEDIATELY AND CONTACT MICHAEL BARREN AT THE KHSAA OFFICES SHOULD YOU HAVE QUESTIONS.

STATE SOCCER TOURNAMENT SUGGESTED DIRECTIONS

From the South:

Take I-75 North to Exit 104 (Lexington); turn left off ramp onto Athens Boonesboro Rd. Continue on to Richmond Rd. Take left to merge onto KY-4 S/E New Circle Rd. Take Exit 2 for US 68 toward Lexington/Harrodsburg turning left on Harrodsburg Rd. Proceed to Man O War Blvd, turning right. Proceed approximately 1 mile, turn left into school parking.

From the North:

Take I-75 South to Exit 115; turn right off ramp onto Newtown Pike. Go through four traffic lights; turn right onto KY-4 W/US-60 Bypass E/New Circle Rd/US-25 Bypass N/US-421 Bypass N via the ramp to Airport. Continue to follow KY -4 to Exit 5 B onto US 60 W/Versailles Rd toward Versailles/Bluegrass Pkwy. Turn left on Man O War Blvd, proceed approximately 2 miles and turn right into school parking.

From the West:

Take I-64 East to Exit 58 toward Versailles, merge onto US-60 E/Versailles Rd continue to follow US-60 10 miles. Turn left onto US-60 E/Lexington Rd. Turn right onto Man O War Blvd. Destination is approximately 2 miles on the right

From the Bluegrass Parkway:

Take 72 A to merge onto US 60 E/Lexington Rd toward Lexington. Continue to follow US-60 E. Turn right onto Man O War Blvd. Destination is approximately 2 miles on the right

From the East:

Take I-64 West to I-75 South, follow directions from the south.

For GPS

Paul Laurence Dunbar
1600 Man O War Blvd
Lexington, KY 40513

INSTRUCTIONS FOR PARTICIPATING TEAMS

PLAYER PARTICIPATION/ROSTER

Upon the arrival of each team a KHSAA representative will be at the bus unloading area to assist you in locating the locker room and to make arrangements for dressing room assignments. Participating teams are required to submit a roster in **numerical order** identifying **phonetic pronunciations** of names to the press box upon arrival. Rosters submitted in any other fashion will **not** be accepted. Prior to each match, head coaches must designate, on a copy of the submitted roster, which twenty-four players will be used in that particular match. At the discretion of the school, additional team members may be allowed in the bench area. However, additional players may not be in uniform and are subject to normal bench decorum. These players will enter with the team and have a pass that has been provided to your school.

HOME TEAM AND VISITING TEAM

The team in the top bracket of the tournament draw will be the home team in all matches and will occupy the bench nearest the scoreboard. The home team will wear the white/light colored jerseys and white socks. The team in the bottom bracket of the tournament draw will be the visiting team in all matches and will occupy the bench opposite of the scoreboard. The visiting team will wear the dark jerseys and dark socks. KHSAA staff will resolve conflicts regarding these issues and both team should be prepared to have both light and dark jerseys and socks available.

LOCKER ROOMS

A representative of the school and the KHSAA playoff staff will inspect the locker rooms before and after the game. It is expected that the locker rooms will be left in the same condition in which they are found. The KHSAA will take whatever action is necessary including fining the particular school and assessing the **cost for cleanup** to those schools leaving the locker rooms in unsatisfactory condition or **damaging** any of the property.

BLEACHERS AND STADIUM

Fans and student are not permitted to stand on the bleacher seats. Any bleacher or seat damage that occurs as a result of fans standing on or stomping the bleachers or seats will be charged to the school. Fans that continue to stand or stomp on the bleachers after being warned by KHSAA and/or Law Enforcement will be escorted from the stadium.

PASS LIST

Each school will be provided with sixteen (16) passes. The school will determine who should receive these. **All team personnel (coaches, managers, trainers, non-uniform players) will need a pass.** It is up to the participating school to determine how to distribute the remainder passes (Superintendent, Principal, Athletic Director, coaches wives, yearbook photographer etc.) Team members in uniform (up to 24 total) and holders of a pass will be the **ONLY** free admission groups to the participating schools.

ADMISSION

All ticket prices are \$10.00. Children 10 years of age and under will be admitted free. Cheerleaders, in uniform, will be admitted free of charge. Coaches' cards, administrators' cards and/or officials' ID cards will **NOT** be honored at the gate.

PARKING

Please see attached aerial view of Paul Laurence Dunbar's campus for spectator parking and team bus parking.

EXPENSE ALLOWNACE

Each participating team will receive an expense allowance for twenty-four (24) players and one coach.

STATE TOURNAMENT OFFICIATING ASSIGNMENTS

In compliance with the Federal Court Decree, the Commission composed of the Commissioner and the four assistants will assign all referees. Four officials shall be used for each post season match. All officials will be assigned by the KHSAA.

PLAYING RULES AND REGULATIONS (ALL TOURNAMENTS)

National Federation Playing Rules will be utilized. Per NFHS playing Rule 4 (Section 1 Art. 1 j. 1.) "All jerseys, except those worn by goalkeepers shall be **NUMBERED** on the back with a different Arabic number at least 6 inches in height and on the front (jersey or shorts) with the same number which shall be at least 4 inches in height.

MERCY RULE

By state association adoption, Rule 7 Section 1 (Art. 5...) a goal differential may be established whereby at the end of the first half if one team has gained the established goal differential or if it secures such differential during the second half, the game shall be ended. The Mercy Rule will be observed in post-season play.

REQUIRED SOCCER BALL (RAWLINGS)

The official ball for all KHSAA post season soccer events is the Rawlings Soccer Ball. All balls will display the National Federation Authenticating Mark. The KHSAA will provide the game balls.

BALL CHASERS

A minimum of two ball chasers must be used for each game. The KHSAA will provide the ball chasers.

WEATHER INTERRUPTIONS

If a game is interrupted in tournament play, it will be reset at the same point, same time period in either half (the game will not be restarted).

MEDIA/VIDEO TAPING/FILM

Press, radio and TV representative's passes will be made available upon request by contacting the KHSAA in advance

- ⊕ The KHSAA owns all rights to all rounds of the KHSAA playoffs, including the media rights.
- ⊕ No exclusive site contract for regular season coverage shall be valid in the postseason as the rights are owned by the KHSAA.
- ⊕ The KHSAA specifically controls all broadcast and television rights to KHSAA playoff games, but allows the local manager to coordinate these rights for these games upon mutual agreement of the competing teams;
- ⊕ The participating teams shall agree on all matters concerning radio broadcasts, television, films, video taping, press box access and communication equipment.
- ⊕ There will be no video streaming allowed for any of the State Soccer Semi-Finals or Finals.

TRAINER

The KHSAA will provide an athletic trainer for all tournament matches. He/She will be located by the team bench area.

SCHOOLS THAT ADVANCE TO FINALS

The Athletic Director (or designated representative) of the semi-finalist school that advances to play in the final, must stop by the ticket booth and see the KHSAA representative to pick up a packet of pre-sale tickets that may be sold at their schools for a reduced price. Unused tickets, the enclosed GE11 form and a check for those that were sold should be given to the KHSAA representative at the ticket booth Saturday night one (1) hour before your game.

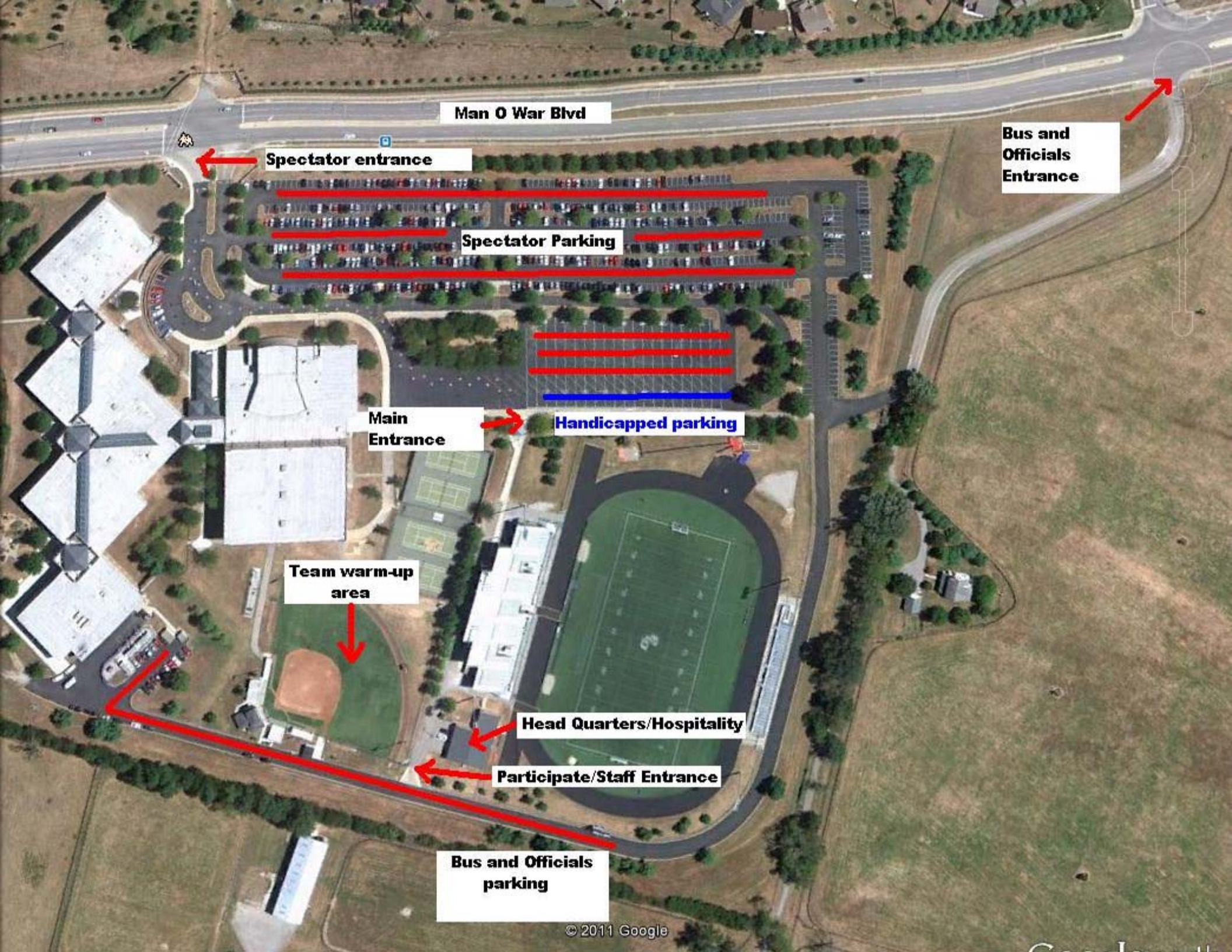
SPORTSMANSHIP STATEMENT

The National High School Federation and the Kentucky High School Athletic Association require officials to enforce sportsmanship rules. High school athletics emphasize positive values. All of us have worked hard to create a sense of teamwork and responsibility. We remind you that we expect good behavior and will quickly penalize misconduct. We encourage and appreciate your help. Let this competition reflect mutual respect among all participants and officials. Good luck and have a great contest!

KHSAA TOURNAMENT (POST SEASON) OVERTIME RULES

When the score is tied at the end of regulation time, the referee will instruct both teams to return to their respective team areas. There will be five minutes during which both teams may confer with their coaches and the head referee will instruct both teams as to proper procedure.

1. There shall be two five minute sudden-victory overtime periods.
 - a) A coin toss shall be held-as in Rule 5-2-2d.
 - b) At the end of the first sudden-victory period, teams shall change ends.
 - c) There shall be a two minute interval between periods.
2. If the score remains tied, all coaches, officials and team captains shall assemble at the halfway line to review the procedure as outlined below:
 - a) The head referee shall choose the goal at which all of the kicks from the penalty mark shall be taken.
 - b) Each coach will select any five players, including the goalkeeper, on or off the field (except those who may have been disqualified) to take the kicks.
 - c) A coin toss shall be held as in Rule 5-2-2d. The team winning the toss shall have the choice of kicking first or second.
 - d) Teams will alternate kickers. There is no follow-up on the kick.
 - e) The defending team may change the goal keeper prior to each penalty kick.
 - f) Following five kicks for each team, the team scoring on the greatest number of these kicks shall be declared the winner.
 - g) Add one goal to the winning team score and credit the team with a victory. An asterisk (*) may be placed by the team advancing to indicate the advancement was the result of a tie breaker system.
3. If the score remains tied after each team has had five kicks:
 - a) Each coach will select five different players than the first five who already have kicked to take the kicks in a "sudden victory" situation, wherein if one team scores and the other team does not score, the game is ended without more kicks being taken. If a team has fewer than ten available players at the end of the first set of kicks from the penalty mark due to either injuries or disqualification, the coach must use all players who have not participated in the first five kicks. The coach may choose additional players from the first five kickers to ensure that five different players participate in the second set of kicks. b) If the score remains tied, continue the "sudden victory" kicks with the coach selecting any five players to take the next set of alternating kicks. If a tie still remains, repeat 3-A.
4. During all tiebreaker penalty kicks, the ball remains alive until its momentum is spent, it goes out of bounds or it is retouched by the kicker.



Man O War Blvd

Spectator entrance

Bus and Officials Entrance

Spectator Parking

Main Entrance

Handicapped parking

Team warm-up area

Head Quarters/Hospitality

Participate/Staff Entrance

Bus and Officials parking