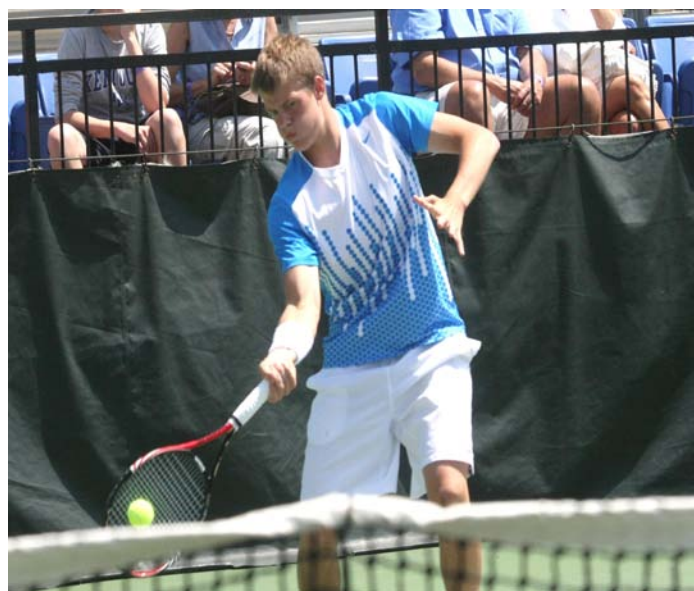




2012 KHSAA

BOYS' AND GIRLS' TENNIS REGIONAL & SECTIONAL TOURNAMENT INFORMATION



May 4-12, 2012

TABLE OF CONTENTS

Regional Tournament Eligibility	Page 3
Regional Tournament Pairings	Page 4
Scoring	Page 4
Tie-Breaker(s)	Pages 5-8
Coaching	Pages 8
Miscellaneous Tournament Procedures	Page 9
KHSAA State Tournament Eligibility	Page 10
KHSAA State Tournament Seeding Committee Chair	Page 11
All-State Teams	Page 11
Code of Ethics	Page 12
Sectional Information	Page 13

Michael Barren
KHSAA Assistant Commissioner
2280 Executive Drive Lexington, KY 40505
Phone: (859)299-5472
Fax: (859)293-5999
mbarren@khsaa.org



REGIONAL TOURNAMENT ELIGIBILITY

Qualifying Entrants from Each Team:

To be eligible for the Regional Tournament, a contestant shall have competed in a minimum of four (4) high school tennis matches representing his/her member school during the regular season. Verification of these matches (including match scores) shall be listed on or attached to his/her Player Profile Form <http://www.khsaa.org/forms/tn105.pdf> (KHSAA Form TN #105). It is recommended that schools play matches consisting of two-out-of-three sets.

Each player is limited to either singles or doubles competition in post season.

No more than two singles players and two doubles teams may be entered from each school into the Regional Tournament. However, a school may have less than two singles players and/or two doubles teams and still be eligible for the Regional Tournament.

Entry Forms to be Completed and Submitted:

Please completely fill out the Post Season Tournament Roster Form <http://www.khsaa.org/forms/tn104.pdf> (KHSAA Form TN #104) for your school and ensure that all information on this one-page form is accurate before submitting. Region Managers please forward a copy to the KHSAA (mbarren@khsaa.org) and Sectional Manager ASAP. The Regional Tournament Entry Form <http://www.khsaa.org/forms/tn103.pdf> (KHSAA TN103) is to be submitted to your Regional Tournament Manager NO LATER THAN the deadline date established by your respective Regional Manager.

Please fill out a Player Profile Form <http://www.khsaa.org/forms/tn105.pdf> (KHSAA Form TN105) for **each** singles and doubles **player** (which means there could be up to six (6) Player Profile Forms submitted). Coaches shall list any pertinent information on pages two and three of this three-page form which might help the Regional Tournament Manager in seeding decisions. If a player qualifies for the KHSAA State Tennis Tournament, his/her Player Profile Form (Form TN #105) will be forwarded to the KHSAA State Tournament Seeding Committee Chair for KHSAA State Tournament seeding purposes; therefore, ensure each form is filled out as thoroughly and accurately as possible. Player Profile Forms (TN #105) must be submitted to the Regional Tournament Manager at the same time as the Regional Tournament Entry Form (TN #103).

Substitutions

Any player whose name is on the Post Season Tournament Roster Form (KHSAA Form TN104) may be substituted for the original entry prior to the draw. After the draw is final, the Regional Tournament Manager may allow a substitution if the original entry is prevented from entering the event because of circumstances due to injury/illness. No advantages may be gained by a substitution or it will not be allowed. Substitutes must be players who are NOT already entered into the Regional Tournament. Players must be substituted into the open position. Substituted players must produce their Player Profile Form (KHSAA Form TN #105) (which will include their four match verification) prior to play.



REGIONAL TOURNAMENT PAIRINGS

Each Regional Tournament Manager shall have a meeting that is open to anyone who wishes to attend. The pairings for the Regional Tournament will be made at this meeting by the Regional Tournament Manager, who has the authority to seed players in accordance with their ability or draw for positions for all or any number of contestants. Guidelines shall be established by the Regional Seeding Committee as to who may participate and/or give input in the seeding process.

Coaches shall list any pertinent information on pages 2 and 3 of the Player Profile Form (Form TN #105) which might help the Regional Tournament Manager in seeding decisions. Also, coaches are encouraged to add any attachments as necessary which will help determine seeding for post season play. In a sanctioned tournament, the maximum seeding allowed is one (1) player in every four (4), or a major fraction thereof.

- Players from the same school shall be placed in opposite brackets.
- No player will be required to play more than three (3) matches per day.
- Rest periods between matches are to be sixty (60) minutes unless BOTH players agree to waive this time period. This topic is to be discussed and confirmed at the Regional Tournament Seeding Meeting.
- All match play shall be two out of three sets. At discretion by Regional Manager and approval by the KHSAA for emergency use only, play may be modified 2-3 with 3rd set super tiebreaker (10 by 2) provided this is done for the entire round and or beginning of following rounds. (Eight game Pro Set scoring / No Ad scoring are a last resort and again, can only be used for emergency peruses upon approval by KHSAA Office.)
- Pro Sets may be considered for doubles seeding purposes only.

SCORING

Qualifying Teams

For Regional Team Championship consideration, **schools must have a minimum of members** listed on TN104. At this time (2012) that number stands at seven (7).

Point System to Determine Team Championship:

Each singles player and doubles team will receive one (1) point for each match that is won throughout the Regional Tournament. The school who accumulates the most points throughout the Regional Tournament is the Regional Tournament Champion. The school accumulating the second-most points throughout the Regional Tournament is the Regional Tournament Runner-Up. If a player or doubles team receives a bye in the first round, that player or doubles team shall get two (2) points for the next round only **IF** the player or doubles team wins the second round match. If the player or doubles team with the bye LOSES their second round match, the player or doubles team who had the bye will get zero (0) points.

Draw Sheets

When the draw sheets are not identical (example: girls' singles uses a 64 position draw sheet and girls' doubles only needs a 32 position draw sheet), the point system is as follows: the 64 position draw sheet will use the point system outlined in the above paragraph. The 32 position draw sheet will award two (2) points for a first round win and one point for each match thereafter. Zero (0) points are awarded for byes until a match is won.

There shall be no feed-ins (0-32 singles players/doubles teams requires a 32 position draw sheet; 33-64 singles players/doubles teams requires a 64 position draw sheet; etc.). A default counts as a win and is scored as 6-0, 6-0. A retired player is scored as is when he or she retired.

TIES

In the Case of a Tie In Points for the Team Championship:

In the case of a tie in team points to determine Regional Tournament Champion, the playoff shall be scheduled immediately following Regional Tournament play. **It is the coach's responsibility to have his/her team on-site ready to play.** A brief rest period may be designated by the Regional Tournament Director if necessary. In the event of inclement weather or darkness, the Regional Tournament Director may schedule the playoff for the following day. Any Regional Tournament ties for the State Tournament qualifying positions MUST be broken. Listed below are tie-breaker procedures that will be put into effect for both boys and girls.

In the case of a tie in team points to determine the Regional Tournament Champion, only the team(s) tied for first who do not win the tie-breaker procedures will be Regional Tournament Runner-Up; the team(s) who accumulated second-most points during the Regional Tournament, when there is a tie for first, will not be Regional Tournament Runner-Up.

Two-Way Tie for First Place (Team)

In the case of a two-way tie in points for the team championship in the Regional Tournament, the number 1 and 2 singles players, and number 1 and 2 doubles teams from each school shall play each other (1 match each, 2 out of 3 sets) to decide the team winner. The matches will go as follows:

- The #1 singles player from each school will play one (1) match against each other
- The #1 doubles team from each school will play one (1) match against each other
- The #2 singles player from each school will play one (1) match against each other
- The #2 doubles team from each school will play one (1) match against each other

Each school will have declared their #1 and #2 players in singles and their #1 and #2 doubles teams on the Regional Tournament Entry Form (TN #103). These declarations must be consistent with season play. If a school does not have entries in one or more of the matches in the brackets of the tie-breaking round, that match shall be scored as a 6-0, 60 victory for the team that has an entry.

If one of the schools wins either three (3) or four (4) of the matches listed above, then that school will be the Regional Tournament Champion. If both schools win two (2) of the matches listed above, then a tie remains, and the school winning the most games during the playoff round is declared the Regional Tournament Champion. If both schools win the same number of games during the playoff round, then the tie-breaker process shall be repeated until a winner is declared.

Three-Way Tie for First Place (Team):

(Process for determining the order of play to break the three-way tie) In the case of a three-way tie in points for the team championship in the Regional Tennis Tournament, the tied teams shall be ranked by the number of games won during the Regional Tournament. If this ranking results in a tie, it shall be broken by ranking the tied teams in order by the fewest number of games lost. If this ranking results in a tie, it shall be broken by a blind draw.

Following this ranking, the two tied teams ranked lowest shall play each other in the first round of the tie-break, with the number 1 and 2 singles players, and number 1 and 2 doubles teams playing each other in a 12-point tie-break game (12-point tie-break games outlined on page 5).

Each school will have declared their #1 and #2 players in singles and their #1 and #2 doubles teams on the Regional Tournament Entry Form (TN #103). These declarations must be consistent with season play. If a school does not have entries in one or more of matches in the brackets of the tie-break round, that match shall be scored as a 7-0 victory for the team that has an entry.

(Once order of play to break the three-way tie has been determined)

(Assuming schools A & B must play each other and school C begins with a

bye) The 12-point tie-breaker games will go as follows:

- The #1 singles player from each school will play one (1) 12-point tie-break game against each other
- The #1 doubles team from each school will play one (1) 12-point tie-break game against each other
- The #2 singles player from each school will play one (1) 12-point tie-break game against each other
- The #2 doubles team from each school will play one (1) 12-point tie-break game against each other

If one of the schools A or B wins either three (3) or four (4) of the 12-point tie-break games listed above, then that school will advance to play 12-point tie-break games against school C. If both schools A and B win two (2) of the 12-point tie-break games listed above, then the school A or B with the most points during the tie-break playoff round will advance to play 12-point tie-break games against school C. If both schools A & B win the same number of points during the tie-break games, then those same schools will replay the 12-point tie-break games using the same format as above (#1 singles player from each school playing one (1) 12-point tie-break game against each other, etc.).

This process will continue until someone advances to play a 12-point tie-break against school C.

(Assuming school A advances) Each school will have declared their #1 and #2 players in singles and their #1 and #2 doubles teams on the Regional Tournament Entry Form (TN #103). These declarations must be consistent with season play. If a school does not have entries in one or more of matches in the brackets of the tie-break round, that match shall be scored as a 7-0 victory for the team that has an entry. The 12-point tie-break games will go as follows:

- The #1 singles player from each school will play one (1) 12-point tie-break game against each other
- The #1 doubles team from each school will play one (1) 12-point tie-break game against each other
- The #2 singles player from each school will play one (1) 12-point tie-break game against each other
- The #2 doubles team from each school will play one (1) 12-point tie-break game against each other

If one of the schools A or C wins either three (3) or four (4) of the 12-point tie-break games listed above, then that school will be the highest place finisher. If both schools A and C win two (2) of the 12-point tie-break games listed above, then the school A or C with the most points during the tie-break playoff round will be the Regional Tournament Champion. If both schools win the same number of points during the tie-break games, then the tie-break process shall be repeated until a winner of this round is declared.

Since this tie-break example between schools A & C is used to determine the Regional Tournament Champion, the school A or C who loses is declared the Regional Tournament Runner-Up.

Therefore, School B, who lost to School A at the beginning of the Three-Way Tie example, would NOT be Regional Tournament Runner-Up.

Tie for Second Place (Team):

In the case of a tie for second place for the team championship in the Regional Tournament, the tie will be broken by the following:

The team having the highest percentage of games won during the Regional Tournament will be the Regional Tournament Runner-Up.

Example: Team A plays 200 games and wins 100 games = 50%

Team B plays 198 games and wins 156 games = 78.7%

Team C plays 190 games and wins 150 games = 78.9% Team C would be the Regional Tournament Runner-Up. **Note:** When counting percentages, if one of the tied teams does not have a full complement of players (i.e. only one doubles team or only one singles player), then each vacant spot for that tied team will be counted as one 0-6, 0-6 loss.

If two or more teams have the same percentage of games won, therefore still being tied, all of those teams still tied will be declared Regional Tournament Runner-Up.

In Case of a Tie in a Single Set in an Individual Match

All match play shall be two-out-of-three sets. In case of a tie in one of the sets, the following rules will be put into effect for both boys and girls.

12-Point Tie

Break Singles

- Player "A" serves first point (right court)
- Player "B" serves points 2 and 3 (left then right)
- Player "A" serves points 4 and 5 (left then right)
- Player "B" serves point 6 (left)
- Players change ends
- Player "B" serves point 7 (right)
- Player "A" serves points 8 and 9 (left then right)
- Player "B" serves points 10 and 11 (left then right)
- Player "A" serves point 12 (left)
- If points reach 6-6, players change ends and continue as before:
- Player "A" serves point 13 (right)
- Player "B" serves points 14 and 15 (left then right)
- Players will continue to alternate two serves apiece until one player establishes a margin of two (2) points

Change of ends during a tie-break is to be made without any delay other than the 30 seconds allowed between points. Players change ends for one game to start the next set, with Player "B" to serve the first game of the new set.

Doubles:

The same pattern is followed as with singles, with partners preserving the sequence of their serving turns.

(Assuming "A & B" versus "C & D")

- Player "A" serves first point (right court)
- Player "C" serves points 2 and 3 (left then right)
- Player "B" serves points 4 and 5 (right then left)
- Player "D" serves point 6 (left)
- Teams change ends
- Player "D" serves point 7 (right)
- Player "A" serves points 8 and 9 (left then right)
- Player "C" serves points 10 and 11 (left then right)
- Player "B" serves point 12 (left)
- If points reach 6-6, teams change ends and continue as before
- Player "B" serves point 13 (right)
- Player "D" serves points 14 and 15 (left then right)
- Alternate players on alternate teams will continue to alternate two serves apiece until one team establishes a margin of two (2) points

Teams change ends for one game to start the next set with "C & D" to serve the first game of the new set. The set shall be recorded as 7 games to 6. The tie-break game shall count as one game for the ball change, except that, if the balls are due to be changed at the beginning of the tie-break; the change shall be deferred until the second game of the following set.

COACHING

The designated head coach or representative of the school shall accompany the contestants to both the Regional Tournament and KHSAA State Tournament, and the coach's name shall be listed on the Regional Tournament Entry Form (TN #103).

Coaches (as designated on the Regional Tournament Entry Form (TN #103) and approved by the school principal) will be allowed to coach when a player changes ends (except for the first game), at the end of a set, or any authorized rest period. As was discussed at the KHSAA Coaches Rules Clinic and permitted during the regular season, coaching advice may be done between points. Coaches are permitted inside the fence as is permitted during the regular season. Coaching between points shall not disrupt the pace of play.

The coach may enter the court enclosure to coach, but must be non-evasive or distracting to the players while play is going on and to follow proper court etiquette. Coaching may also be done from OUTSIDE of the fencing depending on the limitations of the facility. It is recommended that this be discussed with an agreement by teams prior to play beginning.

Coaching is NOT permitted when the player changes ends during a tie-break game. Coaching is NOT permitted during any warm-up. The following standards must be adhered to:

- In Regional Tournament play, it is the responsibility of the Regional Tournament Manager to enforce the rules and be in charge of all rule interpretations, including the coaching rule. Regional Managers may want to explore the interest among competing schools of hiring an official for the tournament. This would be a cost to the regional tournament not the KHSAA.
- Only the designated head coach or one assistant coach (hired by the school and meeting all of the KHSAA coaching requirements – KHSAA Bylaw 27) for a team may talk to the players.
- Players may not leave the enclosure unless on a “split-set” rest period.
- The break period for coaching begins immediately following the last game point, not when conversation begins.
- During the designated coaching breaks, a player may confer with his/her coach. Both singles players or both doubles teams MUST be at their respective baselines ready to play at the conclusion of the 90-second period. If the break period is NOT adhered to, the following penalties will be applied:
 - Case 1: Both players not ready to play – The server starts the next game 0-30.
 - Case 2: The server is not ready to play – The server starts the next game 0-30.
 - Case 3: The receiver is not ready to play – The server starts the next game 30-0.

Note: If this rule is to work, coaches must work at enforcing the time and resulting penalty. Violations by the coach could result in the KHSAA Point Penalty System going into effect (The KHSAA Point Penalty System is outlined in Section F: Miscellaneous Tournament Procedures). The use of signals (excessive cheering as opposed to applause), veiled suggestions, etc. during play is considered unethical and is not permitted.

MISCELLANEOUS TOURNAMENT PROCEDURES

Inclement Weather

In case of inclement weather, play may be moved indoors and modified scoring initiated may be used if necessary. Guidelines for “no-ad” scoring may be found in the USTA publication Friend at Court.

KHSAA Point Penalty System

The KHSAA Point Penalty System will be in effect for any unsportsmanlike conduct or conduct which disrupts a player’s opponent, or play on surrounding courts. Penalties assessed shall be:

- First Penalty: Point
- Second Penalty: Game
- Third Penalty: Default

The decision for the KHSAA Point Penalty System to go into effect will be at the discretion of the official or the Regional Tournament Manager.

Tardiness

Tardiness for Match Participation Regulation:

- 5 minutes or less tardy – Loss of toss and loss of one game
- 5:01 minutes to ten minutes tardy – Loss of toss and loss of two games
- 10:01 minutes to fifteen minutes tardy – Loss of toss and loss of three games
- More than fifteen minutes tardy - Default

Tennis Balls

Tennis balls will **NOT** be furnished by the Regional Tournament Manager. The Board of Control (KHSAA) decided this

past summer to no longer provide Tennis balls for the regional tournaments. The Regional Teams will have to decide how to address this issue.

Trophies

Individual trophies will be given to the winners and runners-up of both the singles and doubles Regional Tournament. A trophy will also be awarded to the overall Regional Tournament team winner and runner-up.

Continuous Play

Continuous play will be in effect for the first two sets with a ten minute break allowed if split sets. A two minute set break is allowed between the first and second set. After the first game of any set, there is a change of ends with a 90 second changeover on all odd games thereafter.

Dress Code

It is recommended that players wear school uniforms during play.

The following shall **NOT** be allowed during tournament play:

- Visible undergarments under shorts, skirts or shirts (**Note**: Compression shorts, if worn as an undergarment above the knee, are legal.)
- Bare midriffs
- Any garment or hat advertising alcohol, drugs, tobacco products or other inappropriate items deemed objectionable by the Regional Tournament Manager
- Objectionable permanent body markings (tattoos) must be covered; non-permanent body markings (temporary tattoos or body paint) shall be prohibited

KHSAA STATE TOURNAMENT ELIGIBILITY

- From each of the 16 Regions, we will take four singles players and four doubles teams to fill up the entire 64 bracket State Tournament.
- The champion, runner-up and other two semi-finalists in both the singles and doubles regional tournaments shall qualify for the individual State Singles and Doubles Tournaments (top 4 finishers from each region).
- There is a 64-place tournament bracket for each of the Boys' Singles, Girls' Singles, Boys' Doubles and Girls' Doubles. (256 slots to be filled)
- Tennis is also a Team sport and the KHSAA wants to recognize the Team Champions along with the Singles and Doubles Champions.
- The regional winning team shall advance to team section play to be held the Saturday prior to the State Tournament. The Sectional winning teams (4 Boys and 4 Girls) will advance to the semi finals to be played at the Boone Tennis Center at UK.
- This concept will allow approximately 50 more student athletes to participate in the KHSAA State Tennis Tournament Championships!

A player who qualifies for the KHSAA State Tennis Tournament must ensure his or her coach submits the KHSAA State Tournament Entry Form (KHSAA Form #104) and Player Profile Form (Form TN #105) to the Regional Tournament Manager. Coaches should update the Player Profile Form (Form TN #105) with Regional Tournament results and resubmit the updated Player Profile Form (Form TN #105) to the Regional Tournament Manager before leaving the Regional Tournament site.

THE REGIONAL MANAGER IS TO COMPLETE THE REGIONAL RESULTS FORM (KHSAA FORMS #102) AND E-MAIL RESULTS TO THE STATE SEEDING CHAIR AS SOON AS POSSIBLE FOLLOWING THE REGIONAL TOURNAMENT. Coaches are responsible for including as much player information as possible on these forms for seeding purposes.

This information MUST be brought to the State Seed Meeting and Draw by the Region Representative on Monday, May 23. The designated high school coach who has met all of the KHSAA coaching requirements (KHSAA Bylaw 27) must be listed on the KHSAA Post Season Tournament Roster Form (Form TN104) for each school.

KHSAA STATE TENNIS TOURNAMENT SEEDING COMMITTEE CHAIR

Ms. Kathy Johnston

Cell Phone: 859-494-2509

E-Mail: kathy.johnston@bourbon.kyschools.us, lexingtonkathy@aol.com

All-State Tennis Program

The All-State Team is sponsored by the USTAKY. The All-State Tennis Teams are selected by the All-State Tennis Committee, which is comprised of Kentucky high school tennis coaches. The KHSAA assists in the collection of nominations only and does not take part in the actual selection process.

All-State Tennis Team Nomination Forms (<http://www.khsaa.org/forms/tn106.pdf>) (KHSAA Form TN #106) shall be submitted to the KHSAA office no later than Tuesday, May 15, 2012. The All-State Tennis Teams will be announced on Saturday, May 19, 2012 during the KHSAA State Tennis Tournament.

CODE OF ETHICS REGARDING STACKING

KHSSA BOYS & GIRLS TENNIS

REVISED 01/30/2012

Stacking is NOT Permissible

Sports such as tennis have unwritten codes of ethics that are traditional and inherent in the playing rules. Coaches and players have a responsibility to uphold the ethics of tennis as well as the game rules. In an effort to promote fair play and wholesome team competition, coaches shall submit legitimate lineups based on the skill ability of their participating players. Under no circumstances shall a coach stack a lineup. "Stacking" is not permissible.

Lineups Based on Skill Level

A coach shall play his/her lineup according to the ability level of the player, the highest skilled being first followed by the second highest skilled player. Any lineup which places a better skilled player above a lesser skilled player or a better skilled doubles team above a lesser skilled doubles team is legal. Any lineup that places a singles player of lesser skill ahead of a player with greater skill is illegal. Similarly, any lineup which places a doubles team of lower skill ahead of a team with greater skill is illegal.

As the season progresses, lineups may change for a number of reasons, including absences, eligibility, injuries, and the playing ability of participants. A 3rd singles player the first week of the season may be the best singles by the end of the season. As the skill levels change, positions in the lineup may change.

Document Challenges Matches

Coaches should consider a number of factors when determining their lineups. However, the outcome of head-to-head challenge matches between singles players or doubles teams of equal or comparable skill level are essential in evaluating the skill level and proper placement in the lineup (i.e. 1st singles, 2nd singles, 3rd singles). As the season progresses, coaches should continue to use challenge matches as needed to evaluate the growth, development and changing skill level of players and then adjust the lineup accordingly (weather & time permitting). The dates and results of all challenge matches should be recorded as evidence of the ethical placing of players in case a lineup is questioned or an unsporting conduct complaint is filed.



TEAM SECTIONAL INSTRUCTIONS 2012

Regional Managers

- Please give the Coach of the Regional Champion Boys and Girls Team a copy of these instructions.
- Also provide copies of the TN#104 Form that these teams used for regional entries to the Sectional Managers ASAP. The Post Season Tournament Roster form (TN#104) will serve as the eligibility roster for sectional play.
- Contact the KHSAA with the results of the Regional Team Championships.

Sectional Managers

- Contact the KHSAA office (Michael Barren or Ne'cee Anderson) with information in regards to the site information for your sectional play. mbarren@khsaa.org or nanderson@khsaa.org (859) 299-5472.
- You MUST be able to play all three singles and both doubles at the same time. So your facility must have a minimum of five (5) courts.
- Sectional play must be on Saturday May 12, 2012. Sunday is to be held for a possible rain day.
- Awards will not be presented to the Sectional Champions at the Sectionals, so you will not receive any awards to be presented at your Sectional. The four teams that move on to the state, will receive awards dependent upon their finish.
- Members playing in the singles and doubles championships may represent the member school in the team championship series.
- Section and State team format shall be 3 singles and 2 doubles, best 2-3 with a 12-point tie-break. The winner shall be declared when one team has won 3 matches and all other play shall stop at that time.
- The finances of the Team sectional tournament will be managed at the local sectional level.
- The same coaching requirements/restrictions used in regional play will be applicable in Sectional play.
- In accordance with Bylaw 20, each school having participants in a KHSAA event shall send a school designee to accompany the team.
- In case of inclement weather, play may be moved indoors and modified scoring initiated may be used if necessary. Guidelines for "no-ad" scoring may be found in the USTA publication Friend at Court.
- The KHSAA Point Penalty System will be in effect for any unsportsmanlike conduct or conduct which disrupts a player's opponent, or play on surrounding courts. Penalties assessed shall be: 1st Penalty: Point 2nd Penalty: Game 3rd Penalty: Default. The decision for the KHSAA Point Penalty System to go into effect will be at the discretion of the official or the Sectional Tournament Manager.
- The Same Dress Code used for the region will be applicable to the Sectional.
- The sectional teams may want to discuss the use of an official with cost being shared amongst the four schools.
- Results must be forwarded to the KHSAA Office, mbarren@khsaa.org or nanderson@khsaa.org immediately following the sectional.