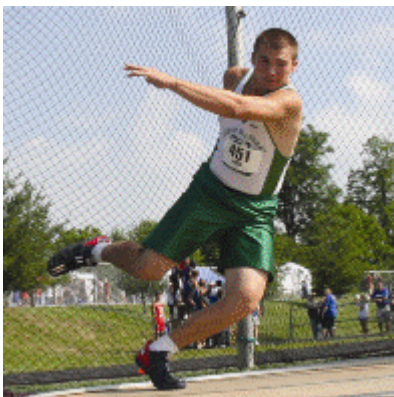




2009 State Track and Field Meet
Information for Teams, Managers and Officials
CLASS 1A – 2A – 3A
Owsley Frazier Cardinal Park, University of Louisville
May 22-23, 2009



SPECIAL NOTE TO ALL COMPETING TEAMS IN 2009

There is a great deal of additional information, including diagrams, marking colors, and other information, located on the KHSAA web site, <http://www.khsaa.org/track>. Coaches would be wise to download the maps and pictures to ensure that they are better prepared for the problems that may be encountered. Check that site regularly as information will be updated each day. Please contact the KHSAA if you have any additional questions.

CONTINUANCE OF RULES FROM REGIONAL MEETS

- ❖ This document is intended solely to highlight the unique aspects of the State Track and Field Meet. All rulings and references regarding competitions are the same as they were for the regional meets, including but not limited to, sportsmanship, KHSAA Bylaw adherence, entry requirements and access.

STATE MEET WARM-UP DAY(S) AND ACTIVITIES

- ❖ By Games Committee Decision, there will be no warm-up time or day for the State Track and Field Meet.

COACHES AND OFFICIALS MEETING

- ❖ There will NOT be a coaches and officials meeting prior to the meet. Selected meet officials will have a mandatory meeting with the Meet Director and Assistant Commissioner, and will be notified of the time and place.

PARKING AND ENTRY

- ❖ Parking will be "on your own" for all parking at the facility. Please note that there is no bus parking along Floyd Street.
- ❖ The following directions begin with the bus headed from the Papa Johns Stadium Lot and headed North on Floyd toward the track.
 - ❖ School busses and labeled vans will be directed, upon entry past the main entrance to the Track on Floyd Street and then make a right at the light at Brandeis.
 - ❖ Go one block and then turn right on Arthur Street. Stay right on Arthur and turn right on Warnock.
 - ❖ Just a few feet down Warnock, you will see the sign-in / admission tent.
 - ❖ You may pick up packets at that tent.
 - ❖ DO NOT LEAVE BUSES AT THAT TENT.
 - ❖ Upon unloading the kids / coaches, the bus needs to move to the left lane and be ready to turn left on Floyd Street to return to Papa Johns Stadium for parking.
 - ❖ A shuttle will return the driver to the Track facility.
- ❖ The KHSAA staff at the gate will control the admission of the bus driver at the check-in tent in front of the track.
- ❖ Yellow lines are tow away areas over which the Association has no control.
- ❖ General parking will be extremely limited on site, particularly on Friday. All towing and parking regulations will be enforced.
- ❖ A shuttle will operate throughout the weekend from Papa Johns Stadium to the Track, and a separate shuttle from the Track to the Discus/Shot Put area.

STATE MEET STARTING TIMES AND SCHEDULE

- ❖ A complete time schedule for the meet is available on the KHSAA web site, <http://www.khsaa.org/track> and by selecting the State Meet Information menu and will be printed on the coaches' packet for reference.

TEAM ENTRY AND ADMISSION

- ❖ All references to team entry in these instructions refer to the large tent that will be located on Warnock Street at the end of the Field Hockey Facility. This is a DIFFERENT ENTRY than the general paying public will utilize.

SPORTSMANSHIP/UNIFORM VERIFICATION

- ❖ National Federation Rules require that each coach be instructed with regards to sportsmanship. This will be covered during the scratch and pre-race meetings and the verification form shall be used. You are to sign that form at the sign-in tent.
- ❖ Prior to the start of the meet, the head coach shall be responsible for verifying to the referee that his/her competitors are properly equipped (uniform, equipment, and no jewelry) in compliance with these rules. Any questions regarding legality shall be resolved prior to the start of the meet.

SCHOOL REPRESENTATIVES DESIGNATED BY BOARD OF EDUCATION

- ❖ All coaches are reminded that KHSAA Bylaw 20 requires a member of the faculty of the school to be present along with any student-athlete who is representing a member school. Please see Bylaw 20 in the 2008-2009

KHSAA Handbook or on the KHSAA web site (<http://www.khsaa.org/handbook/bylaws/bylaw20.pdf>) if you have any questions.

- ❖ Forms submitted at the Regional Meet will substitute if returned to the KHSAA by meet management.
- ❖ An additional form will be emailed to the participating coaches during the week of the meet.

WIRELESS COMMUNICATION

- ❖ The use of wireless communication devices by coaches and competitors is prohibited. This includes cell phone usage at the site between competitors and competitors, competitors and coaches, as well as coaches and coaches.

TEAM TENTS, WARM-UP AREA AND TEAM ENTRY TO TRACK

- ❖ THERE WILL BE NO ALLOWANCE FOR TEAM TENTS AT THE TRACK. Competing teams will be sent instructions from the KHSAA offices about using a portion of two large tented areas that will be provided by the University of Louisville and the rates for such usage.
- ❖ No tent may be set up in the stands.
- ❖ The only entry point for competitors will be at the end of the field hockey field, furthest away from the check-in area. That gate will be marshaled and only competitors with numbers will be admitted through that gate.

COACH AND COMPETITOR PACKETS

- ❖ Coaches may pick up information packets including competitor numbers at the participant entrance tent at the track on Friday, May 22 and Saturday, May 23 in accordance with the meet schedule.
- ❖ It is mandatory for all coaches to sign the briefing, uniform and sportsmanship enforcement provisions when checking in team members and attendants or you will not receive the coaches' packet.
- ❖ It is mandatory that all coaches submit the required transportation form at the time of sign-in, which designates the proper authorities to transport the team or you will not receive the coaches' packet. Forms submitted at the Regional Meet will substitute if returned to the KHSAA by meet management.
- ❖ Pole Vault coaching box passes may only be picked up at the team entrance on Friday morning by checking in with the staff at the tent.

LOST/MISPLACED NUMBERS

- ❖ In the case of a lost number:
 - ❖ Complete forms at main entrance gate.
 - ❖ KHSAA staff will confirm that athlete has events remaining as replacement numbers will not be issued to eliminated/disqualified athletes.
 - ❖ Upon verification, KHSAA staff will sign form authorizing replacement all alert admission personnel to admit the student.
 - ❖ Once signed, form is to be brought to press box for re-issue.
- ❖ Lost number replacements, \$10.00 charge per number.

GATE ADMISSION FOR FRIDAY AND SATURDAY

- ❖ Each contestant (qualified or alternate) will be issued a competitor number assigned after qualification from the regional meet and are responsible for maintaining these numbers at all times.
- ❖ All competitor numbers are issued to the Head Coach on sign-in at the main entrance to the track.
- ❖ A contestant in the state track meet must show his or her number at the team admittance gate to enter without charge and only during that athlete's class meet.
- ❖ Team members may only enter through the team admittance gates and not through the admission game. The competitor numbers are printed for that particular class championship and will only be valid for that meet.
- ❖ State meet contestants should allow plenty of time to report for their events. No event start will be delayed to allow for the arrival of an athlete.
- ❖ Each team (boys or girls) qualifying one to six athletes will be afforded a coaching pass (one) and one additional pass for a team attendance/trainer/manager.
- ❖ Each team (boys or girls) qualifying seven to twelve athletes will be afforded two coaching passes and one additional pass for a team attendance/trainer/manager.

- ❖ Each team (boys or girls) qualifying more than twelve athletes will be afforded three coaching passes and one additional pass for a team attendance/trainer/manager.
- ❖ The price of admission will be \$10.00 per day for all non-contestants over the age of six (6). A two-day pass will be available for \$15.00 for all non-contestants over the age of six (6).

TRACK CONFIGURATION, WARM-UPS AND TRACK SCHEDULE

- ❖ The gates will be open for fans of the 2A meet at 3:00 p.m. on Friday.
- ❖ The track will be open for warm-ups for the 2A meet at 3:15 p.m. on Friday.
- ❖ The gates will be open for fans of the 1A meet at 8:30 a.m. on Saturday.
- ❖ The track will be open for warm-ups for the 1A meet at 8:45 a.m. on Saturday.
- ❖ The gates will be open for fans of the 3A meet at 3:30 p.m. on Saturday.
- ❖ The track will be open for warm-ups for the 3A meet at 3:45 p.m. on Saturday.
- ❖ Maps/schematic diagrams are posted on the KHSAA web site (<http://www.khsaa.org/track>) defining zones, areas for teams, etc. and a copy will be in the team packets. These define any area restricted to coaches and participants NOT COMPETING in field events.
- ❖ No runners are allowed on the track after events begin, except during the designated warm-up periods.
- ❖ Competitors are to report to the area near the end of the field hockey field on the first call to their events.
- ❖ Competitors are to report to the clerk area beneath the scoreboard on the second call to their events. Competitors report to the Clerk of Course in the clerk area near the scoreboard. Participants will then be escorted to the starting line or the field event area.
- ❖ Attendants shall not accompany a competitor to the starting line or during the race. Block holders will only be allowed in situations where it is determined necessary by the starter. Past experience leads management to believe there will be no need for a block holder.
- ❖ Competitors will not be allowed to have non-participating athletes accompany them to field events areas.
- ❖ THERE WILL BE NO special area will be designated for Pole Vault coaches. Those coaches may be in reasonable proximity to the competition outside of the facility but within the area controlled for admission.
- ❖ Competitors may not go across any of the field event areas while competition is underway.

DRESSING FACILITIES

- ❖ Dressing facilities are limited. There are no lockers available. Athletes should come dressed to compete.

REFEREE BRIEFING

- ❖ There will be a referees briefing announced if needed. However, the Referees will be available for consultation at the time and place listed on the state event schedule. This briefing is optional and is solely for the purpose of inquiries and clarifications.
- ❖ Prior to the start of the meet, the head coach shall be responsible for verifying to the referee that his/her competitors are properly equipped (uniform, equipment, and no jewelry) in compliance with these rules. Any questions regarding legality shall be resolved prior to the start of the meet.

PARTICIPATION LIMITS

- ❖ A contestant shall not compete in more than 4 events, any number may be relays. (if a competitor exceeds participation limits, they shall forfeit all individual and team points earned in any event.)

NUMBERS

- ❖ Numbers shall be worn on the front in the running events.
- ❖ Numbers shall be worn on the front in the field events except for high jump and pole vault. Field event chief will direct placement in high jump and pole vault.
- ❖ Hip numbers shall be worn as directed by the clerk in selected events.

LANE ASSIGNMENTS

- ❖ The standard order of events will be followed from the Rules Book with the fastest section running last.
- ❖ The 4 x 800 relay will be run in 2 sections, with 14 in the faster section, and 10 in the slower section
- ❖ The 100/110 Hurdles, 100 Dash, 4x200 Relay, 4 x 100 Relay, 400 Dash, 300 Hurdles, 200 Dash and 4 x 400 Relay will be run in three sections, with the two fastest sections using all available lanes.

- ❖ The 800, 1600 and 3200 runs will be run in one race each.

SCRATCH PROCEDURE

- ❖ There is no penalty for athletes scratching from events after the meet starts, or for athletes failing to finish an event once they are entered.

STARTING BLOCKS

- ❖ All races where the first leg (or entire race) is 400 meters or less shall use blocks for the start.
- ❖ All contestants and teams will use starting blocks available at the University of Louisville.
- ❖ For the few schools that continue to utilize the Moye starting blocks, this is legal and has been approved by the Games Committee. However, if a school desires to use that type of starting block, the athletes/school must provide those blocks, and such must be approved by the Meet Director prior to usage.
- ❖ There shall be no block attendants allowed unless the starter deems otherwise.
- ❖ Competitors will not be allowed to stand on or secure blocks for other competitors.

MARSHAL

- ❖ There will be a marshaling area in the vicinity of the finish line for athletes to report to, immediately following each race. The athletes will be released quickly unless there is a violation during the race. After any final race, the athletes are to immediately proceed to the awards area.

RELAYS AND RELAY CARDS/FORMS

- ❖ Each coach with a qualified relay team has already submitted the names of possible competitors prior to the regional meet.
- ❖ When relay teams check in with the Clerk of Course, the Clerk will mark the competitors that the coach chooses from the available listing.
- ❖ Eight participants were able, prior to the regionals, to be named to a relay team, any four of whom may be used in the finals. Only those relay contestants who actually participate will be considered official entries.
- ❖ Relay competitors do not need to be the same from the Regional Meet to the State Meet.

3200 RELAY / 800 RUN

- ❖ The 3200 Meter Relay and 800 Meter Run will use a staggered start with a two-turn stagger. The athletes may break to the inside at the start of the front stretch of the track.
- ❖ Lapped runners shall run a normal course if permitted to continue in the race.
- ❖ Participants may use tape on the track, but shall remove all tape on competition surfaces after the events.

800 RUN / 1600 RUN / 3200 RUN

- ❖ The 1600 Meter Run and 3200 Meter Run will utilize a one turn stagger with the runners breaking to the inside of the track at the start of the back stretch of the track. Lane assignments for the 1600 Meter Run and 3200 Meter Run will utilize the same format for starting listed above for the 3200 Meter Relay and 800 Meter Run.
- ❖ Lapped runners shall run a normal course if permitted to continue in the race.

400 / 800 RELAY

- ❖ The 800m relay will be run in lanes all the way.
- ❖ Participants may use tape on the track, but shall remove all tape on competition surfaces after the events.

1600 RELAY

- ❖ The 1600m relay will be run with a 3-turn stagger.
- ❖ In the 1600m relay race, the first leg runs the entire distances in lanes. The runners of the second leg in the 4 x 400 relay race shall be free to take over any position on the track after the curve at the entrance to the back straightaway, which is marked with a broken line. The third relay exchanges, "California Exchange" shall be used thereafter until the completion of the event.
- ❖ Participants may use tape on the track, but shall remove all tape on competition surfaces after the events.

QUALIFYING FROM PRELIMINARIES TO FINALS (FIELD EVENTS)

FIELD EVENTS:

- ❖ The order of competition in the throwing events will be set up so the best thrower will go last.
- ❖ The order will be re-done after the preliminaries if necessary.
- ❖ The order of competition in the jumping events will be set so the best jumper jumps last.
- ❖ The top nine competitors in the trials will qualify for the finals in the field events (one more than the number of medaled places).
- ❖ The starting heights for the high jump and pole vault have been determined by the games' committee.
 - ❖ Pole Vault starting height at state meet will be 2' below Class Automatic Qualifying Standard for Boys.
 - ❖ Pole Vault starting height at state meet will be 2' below Class Automatic Qualifying Standard for Girls.
 - ❖ High Jump starting height at state meet will be 4" below Class Automatic Qualifying Standard for Boys.
 - ❖ High Jump starting height at state meet will be 4" below Class Automatic Qualifying Standard for Girls.
- ❖ Games Committee reserves right per NFHS rules to adjust starting height due to unforeseen conditions.

CONTESTANTS AND TEAM SCORE AT THE STATE MEET

- ❖ Only teams and individuals that have qualified in a regional meet are eligible to enter the state meet.
- ❖ All individuals placing eighth or higher in each event shall score team points in the state meet.
- ❖ The team score shall be determined by totaling the points scored by the eight place finishers, using a 10-8-6-5-4-3-2-1 scale.

TROPHIES AND AWARDS

- ❖ The awards area will be located on the track, past the finish line area.
- ❖ Competitors shall report to the awards area immediately following the finals in each event. **Advise your athletes to immediately proceed to the awards area if they place in the top 8 based on announcements made by the Public Address Announcer. For 2009, attempts will be made to concentrate the awards presentations to be held during the 1600 and 3200 meter runs.**
- ❖ There should be no lag in the awards presentation so as to allow the athletes adequate rest and recovery by taking care of that item immediately.
- ❖ Medals will be awarded for the first eight places in each event at the state meet.
- ❖ Team trophies will be given to the top four (4) teams in each class immediately following the conclusion of the last event.

PICTURES AT STATE MEET

- ❖ As soon as the awards are presented, the top four teams in each classification are to report for official meet pictures.

MEET RECORDS

- ❖ Anyone with additional state meet record information from prior years should contact Sports Information Director Elden May in the press media area.

APPEALS

- ❖ Appeals shall be submitted to the meet director who will present the appeal to the appropriate referee. The jury of appeals shall be the final authority. Only those issues for which the NFHS rules specify are appealable. This shall be turned in at the finish line trailer.

APPEAL PROCEDURE

- ❖ A coach first protests to the referee. If the coach still feels that the terms and conditions of competition or the application of the rules have been misapplied or misinterpreted, a written appeal shall be made to the jury.
- ❖ Situation which are subject to appeal include, but are not limited to:
 - ❖ Misapplication of the rules, which must be filed within 10 minutes after the announcement of event results.
 - ❖ Correction of clerical or team scoring errors which may be corrected up to 48 hours after the end of the meet, unless another time period is specified in advance by the games committee or meet director.

- ❖ Correction of meet results involving an ineligible participant which may be made at any time when discovered.
- ❖ Failure to follow a procedure contained in the terms and conditions of competition announced in advance by the games committee or meet director. This would include such items as the time schedule, the number of qualifiers to advance, number of trials, etc.
- ❖ The following are non-appealable situations
 - ❖ Any judgment decisions pertaining to violations or alleged violations of the rules.
 - ❖ A decision made by the finish judges or timers that does not involve misapplication of a rule, or the terms and conditions of competition.
 - ❖ Whether a start is fair and legal.
- ❖ If a coach wishes to appeal a track or field situation, the appeal must be put in writing and submitted immediately (within 10 minutes) after the situation occurs.
- ❖ There will be extra appeal forms available in the team entrance tent for this purpose. The HEAD COACH ONLY shall submit the appeal to the finish trailer where the Meet Director will process. The jury of appeals shall be the final authority.

FACILITY SAFETY AND GENERAL INFORMATION

- ❖ Several areas of the facility will be marked as off limits with flagging, barriers and signage. Coaches are directly responsible for athlete's adherence to these areas.
- ❖ Athletes are not to wear spikes when sitting in the bleachers.
- ❖ Excessive noise, to include artificial noise makers, radios and musical instruments, will be prohibited for the duration of the State Meet.
- ❖ Athletes and school representatives may not bring implements from other sports (Frisbees, footballs, nerf balls, baseballs, soccer balls, softballs, etc.) as space is limited by the amount of athletes present and safety is minimized if these activities occur.
- ❖ Coaches and athletes should drink plenty of water throughout the day, particularly if it is a warm day. The Training staff will have plenty of water available.
- ❖ The Association will use the services of University of Louisville and Dr. Rudy Ellis Sports Medicine to provide trainers for the State Track Meet. The tent is located on the sideline of the field hockey field near the press box. There will be a small service area near the finish line.
- ❖ Food vendors will be located at the entrance levels. These stands will have an ample supply of items, over which the Association does not control price.
- ❖ The Association's official novelty vendor will be set up trackside just outside the concession stands and will have a wide array of souvenir merchandise.
- ❖ KHSAA Policy as adopted by the Board of Control allows individuals to videotape events at the State Track Meet. However, the policy expressly prohibits the use of a tripod or external power supply.
- ❖ SCHOOLS ARE RESPONSIBLE FOR PAYING FOR THEIR OWN EXPENSES TO THE STATE MEET.

SEVERE WEATHER POLICY

- ❖ The Referee or head official must delay or cancel a competition at the first sound of lightning or thunder at the site and the site should be cleared of all persons immediately by event administration. If it is anticipated that the storm will pass, the competition may be resumed following a three (3) minute warm-up period, no sooner than thirty (30) minutes after the last sight of lightning or the last sound of thunder.
- ❖ If the severe weather is of great length or intensity, the Referee or lead meet official has the responsibility and authority to cancel the competition. Officials are encouraged to learn the weather forecast prior to game time. Safety of the public and participants is the most important factor in any decision of this type.

INCLEMENT WEATHER DECISIONS

- ❖ While it would be ideal if all parties could meet and agree on any re-scheduling of meets necessitated by inclement weather or other natural events, this may not be practical. It is the duty of the meet manager in consultation with the participating teams to make decisions with regards to re-scheduling in the event of postponement and ensure that all teams, media outlets and schools are properly notified. In accordance with the adopted policies, after the contest has begun, the referee shall make such determination.

INCLEMENT WEATHER AND MEET POSTPONEMENT

- ❖ There is always a possibility of inclement weather. In that event, be prepared to move to a place of shelter. Should it begin to rain, the meet will continue on schedule unless there are signs of lightning or the Games Committee determines that it is unsafe to continue a specific event or the meet as a whole.
- ❖ Should weather force a postponement or delay, immediately leave the bleacher area upon hearing the announcement.
- ❖ Should evacuation be necessary, directions will be given by uniformed officers as well as meet officials.
- ❖ Facilities at the University of Louisville are available as emergency shelter or you can seek refuge in the parking lot in individual or team transportation.
- ❖ In any and all circumstances, use prudent judgment in determining whether or not you should remain in the bleachers.
- ❖ Should the meet be suspended, the following procedure will be utilized for resuming the schedule:
 - ❖ When the decision is made to resume the meet, uniformed officers and meet officials will circulate through the parking lots and the school announcing the the meet will be resumed.
 - ❖ When resumed, there will be a fifteen minute warmup and waiting period prior to the first call for the first resumed event.
 - ❖ Once the first even has begun, the meet will continue on the standard basic time schedule.

TRACK AND FIELD UNIFORM AND UNIFORM NOTES

- ❖ The uniform rule for the state meet is the same as it was for the regional meet, and should be reviewed by each coach with all competitors prior to the start of the state meet.