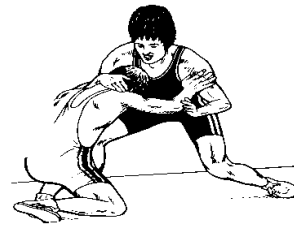


**2009 Post Season Tournament
Information For Each
Participating School**



2009 WRESTLING TOURNAMENT INFORMATION

STATE AND REGION SITES AND INFORMATION

The official State High School Wrestling Championship Tournament will be held at the Frankfort Convention Center in the Frankfort Convention Complex, Frankfort, Kentucky, on Thursday through Saturday, February 19-21, 2009. Regional meets will be hosted by managers in each of the eight regions. A complete list of tournament sites and managers is available on the KHSAA web site, <http://www.khsaa.org/wrestling>.

REGION TOURNAMENT INFORMATION

REGION WRESTLING FORMS AND CERTIFICATION VERIFICATION

- ❖ Teams will find on the KHSAA web site (<http://www.khsaa.org/wrestling>) and on the NWCA web site (<http://www.nwcaonline.com>), all forms necessary to enter individuals in the Region Wrestling Tournament.
- ❖ You will need three printouts from the NWCA site.
 - For the first printout, you will print your weigh-in entry sheet. Be sure and include support data any wrestler that you feel may be placed in the tournament as an alternate due to sickness, injury, or coaching decision.
 - To generate this printout, go to the NWCA system and perform the following steps:
 - Login as your school (KY school number and your password)
 - Click on COACHES at the top
 - Click on Competition Data Entry and Season Grid Form
 - Click "Create Pre-match weigh-in report"
 - Enter the header info (region date and Region Title)
 - Click Next
 - Check each wrestler you desire to enter and pull down the desired weight class
 - Click Next
 - Click "Print weigh-in form"
 - Submit this as a substitute for the previously required WR117
 - For each wrestler, you must bring copies of the signed WR101 (produced by the NWCA system) to the seeding meeting in case of permission challenge.
 - For each wrestler, you also must produce the Individual Weight Loss Plan. This requirement is for all to monitor the fact that on or prior to January 31, the athlete legally weighed in at the desired entry weight.
 - To produce the form, Click on Weight Loss Plan:
 - Select the individual wrestler
 - Print the results
 - You will note from the report that the actual weights are listed on the right of the minimums. Any wrestler who did not make a weight legally (i.e. their scale weight was below their minimum weight) did not make weight for this requirement.
 - Bring this report for each athlete to be entered in postseason
- ❖ On the KHSAA site, select the forms menu, and then click on the form name to download the form immediately. You must have the PDF reader to use the PDF copy, Microsoft Word® to download the doc format. The following are the form(s) and their use –
 - WR111 – This form is the required skin-condition form. Please make certain you have this completed for any athlete who has even the most remote chance of being viewed by an opposing coach or the officials as being

contagious to others. No other form of note is to be accepted by the officials. Blank copies are at <http://www.khsaa.org/forms/wr111.doc> or <http://www.khsaa.org/forms/wr111.pdf>.

- ❖ You will not need to complete any additional forms after the regional meet to enter the state meet as your regional manager will take care of that entry.

ATTENDANCE AT SEEDING MEETING

- ❖ The weigh-in verification forms described above and produced by the NWCA online system must be brought to the region seeding meeting by the coaches as well as the entry forms (WR117) and the NWCA entry form.
- ❖ Each team shall be in attendance at the seeding meeting in order to enter wrestlers. ***A school without a representative at the region meeting CANNOT enter wrestlers under any circumstances.***

ELIGIBILITY OF A WRESTLER TO ENTER (CERTIFICATION REQUIREMENT)

- ❖ Each coach shall ensure that each athlete has a completed wrestling permission form on file with the school (WR101). This form is to contain signatures from the athlete, the coach and the parents verifying compliance with all rules as well as the health care provider who did the minimum weight testing, and the doctor if the athlete is below 7%. These forms shall be brought to the entry/seeding meeting for submission and verification.
- ❖ An athlete has to legally make scratch weight (including growth after 12/25) at least one time prior to the January 31 deadline, and must have done so on a date that he /she was valid to do so by the NWCA program. An athlete must have a combination of four matches or four weigh-ins representing the high school during the current season in order to be eligible to enter the region.
- ❖ Once a wrestler is certified into a particular weight class as of January 31, he/she may weigh-in only in that class and one class above. He/she is automatically re-certified into a higher weight class after January 31 by weighing in and qualifying for that class, but never into a lower weight class. After January 31, making base weight (including growth) two classes above any previously certified weight class automatically renders that wrestler ineligible for the remainder of the year to wrestle in the lower weight class (previous certified weight).
- ❖ If an athlete competes in a match where no certified scale was available or weighs-in below the NWCA calculated minimum for that date, the weigh-in counts as a "miss" in all fourteen weight classes with respect to achieving a desired weight class weigh-in.
- ❖ Please note that this rule is for weigh-ins, not matches. It is possible that a wrestler weighed in at a certain class weight for a match, but wrestled up into a different class during that match. That weigh-in would count for the lower weigh-in class.
- ❖ There can be no weigh-in on the day of the draw to be used in this count.

REGIONAL SEEDING REGULATIONS AND REGIONAL WEIGH-INS

- ❖ The Regional Committee member of the KHSAA Wrestling Advisory Committee shall chair the seeding committee meeting. He/she should also be assisted by the regional manager, but the Committee member shall be responsible for adherence to KHSAA regulations.
- ❖ The Regional Committee member shall ensure a smooth and expedient meeting of the coaches. The manager and/or Advisory Committee should contact Michael Barren of the KHSAA if there are any issues that need clarification during the meeting.
- ❖ For 2008-2009, those Regional Committee members are:
 - Region 1 – Dennis Walls, Union County
 - Region 2 – Gary Canter, Larue County
 - Region 3 – Alan Martin, DeSales
 - Region 4 – Che Founder, Central
 - Region 5 – Steve Fiser, South Oldham
 - Region 6 – Mike Bankemper, Campbell County
 - Region 7 – Chris McCoy, Lafayette
 - Region 8 – Josh Muncy, Sheldon Clark
- ❖ The Regional Committee member along with the manager will coordinate a meeting of participating coaches for the purpose of making region pairings in each weight class by seeding the participants.

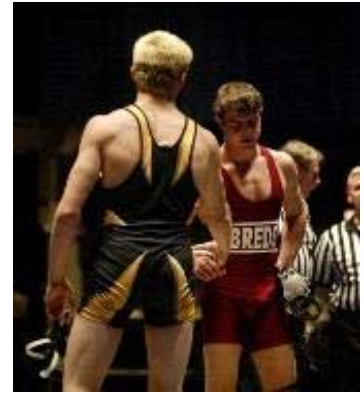
- ❖ Collectively and by majority vote, the member school head coaches shall decide the seeded wrestlers in each weight class. For regions without an adopted seeding plan, the following criteria may serve as a guide:
 - a) Head to head competition between contestants.
 - b) The record against common opponents;
 - c) A contestant with a better overall record;
 - d) A contestant with an exceptional record against acknowledged strong competition;
 - e) A returning champion or runner-up in the same weight class;
- ❖ The member school coaches DO NOT HAVE authority to waive the tournament rules or create new ones for the basic entry, bracket and scoring procedures.
- ❖ Following the initial seeding, the tournament manager and the Regional Advisory Committee member shall develop a preliminary bracket.
- ❖ Once the regional seeding meeting is complete, no alterations can be made to the seeding except per the Regional Tournament Format Section below.

REGIONAL TOURNAMENT FORMAT AND POST-SEEDING MEETING PROCEDURES

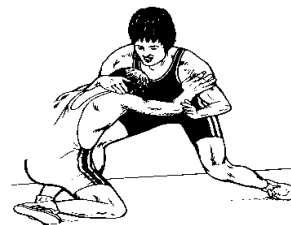
- ❖ After the seeding is completed, a coach may choose to designate a wrestler into another class by notifying the manager prior to the beginning of weigh-ins.
- ❖ Once weigh-ins begin, an athlete may not be entered into a lower class than previously entered by the coach as the scales will have closed on that previous class.
- ❖ An athlete missing weight at the region weigh-ins may be replaced in that weight class by any eligible member of the team who is on the NWCA online Alpha Master report, who meets the qualifications per the minimum weight guidelines, who has participated in four high school matches and/or bouts, who is eligible by the KHSAA Tournament Rules, and who is eligible by all other weight qualification rules including a valid weigh-in at the region.
- ❖ The wrestler missing weight may be moved to either of the weight classes for which his/her scale weight permits.
- ❖ The wrestler missing weight, if not replaced by another wrestler from the same squad, creates a bye in the bracket, and if necessary, brackets may need to be re-drawn to accurately reflect seeding.
- ❖ Once the scales are closed, entries are considered final. At that point, any further withdrawal from the tournament series constitutes a forfeit.
- ❖ If any entered wrestler (seeded or otherwise), due to action of the coach prior to or after weigh-ins, changes weight classes, then the regional committee member and tournament manager shall convene all coaches for a supplemental meeting after the scales have closed for 285 pound class.
- ❖ At that short supplemental meeting the participating coaches shall vote to determine if the wrestler who was seeded in a former class should now be seeded in his/her entered class or if any other wrestler changing classes since the first entries were submitted necessitates an additional seeding discussion..
- ❖ No other wrestling seeding decision from the original seeding meeting is able to be discussed or reconsidered as those are final upon conclusion of the seeding meeting.
- ❖ After this supplemental meeting is completed, the regional committee member and manager shall ensure that the proper bracket is completed for each class according to the bracketing guidelines.
- ❖ All regional wrestling brackets shall be placed in the proper 4-, 8- or 16-person bracket. A 12-person bracket may not be used as the NFHS wrestling rules require a bracket of a power of 4.
- ❖ Each weight class must be considered separately as to bracket size. A weight class with 1-4 wrestlers shall use a 4-person bracket; 5-8 wrestlers shall use an 8-person bracket and 9-16 shall use a 16-person bracket.
- ❖ Due to the number of competitors entered in a weight class, the decision can be made by a majority vote of the competing coaches to use a "pigtail" or preliminary round of competition on the day prior to the regional tournament. In that case, all competitors entered in the class must wrestle on the first day of competition, and all shall receive the NFHS one pound growth allowance on the regional tournament day.
- ❖ There will be a full wrestle-back tournament in each weight class at the region tournament.
- ❖ The region tournament will be wrestled and scored to six places in each bracket.

REGIONAL FUTURE SITES

- ❖ Each region manager has been instructed to review the future dates and sites for tournaments in your particular classification. Please make certain that you see that the schedule is updated.



State Tournament Information For Each Participating School



STATE TOURNAMENT INFORMATION

GENERAL INFORMATION

- ❖ The 46th Annual KHSAA Boys State Wrestling Tournament Championships will be held on February 19-21, 2009 at the FARNHAM DUDGEON ARENA IN THE FRANKFORT CONVENTION CENTER, 405 Mero Street, Frankfort, KY 40601 (phone 502-564-5335).
- ❖ The tournament will run in three days, using four wrestling mats until the consolation finals, three for the Consolation Finals (3rd/4th places, 5th/6th places and 7th/8th places) and one mat for the Championship Finals determining 1st and 2nd places.
- ❖ The 3rd, 4th, 5th, 6th, 7th and 8th place matches will be 2-2-2 minutes as opposed to 1-2-2 for the remainder of the event.
- ❖ All matches for each weight class in the consolation finals will be wrestled concurrently and the next class will not begin until all matches for a specific class have been completed.

STATE WRESTLING FORMS

- ❖ Teams will find on the web site (<http://www.khsaa.org/wrestling>) all forms necessary for the State Wrestling Tournament. Pull down the forms menu, click on the form name to download the form immediately. You must have the PDF reader to use the PDF copy, Microsoft Word® to download the doc format. The following are the forms and their use –
 - WR111 – This form is the required skin-condition form. Please make certain you have this completed for any athlete who has even the most remote chance of being viewed by an opposing coach or the official as being contagious to others. No other form of note is to be accepted by the officials. Blank copies are at <http://www.khsaa.org/forms/wr111.doc> or <http://www.khsaa.org/forms/wr111.pdf>
 - WR119 – This form is to be used for the State Tournament, and will be turned in on the first morning of the tournament to verify that the school is in compliance with state transportation requirements regarding the transportation of athletes. Blank copies are at <http://www.khsaa.org/forms/wr119.doc> or <http://www.khsaa.org/forms/wr119.pdf>
 - WR120 – This form is to be completed for any individuals for which you desire to purchase discounted admission for the entire tournament. See further instructions for eligibility. Blank copies are at <http://www.khsaa.org/forms/wr120.doc> or <http://www.khsaa.org/forms/wr120.pdf>

STATE TOURNAMENT STARTING TIME SCHEDULE AND ADMISSION

- ❖ A complete timetable is published on the KHSAA web site. A complete copy of the timetable is located at <http://www.khsaa.org/wrestling/2009/statemeettimetable.pdf>.
- ❖ Tickets will be priced at \$10.00 for all day on Thursday, \$15 for all day on Friday, and \$15 for all day on Saturday.
- ❖ An all-tournament pass will be available at the gate for \$25, and will be sold through Friday night.
- ❖ A discounted all-tournament pass will be available in advance for coaches and schools and instructions are listed later in this manual.
- ❖ All individuals entering the arena will need to be ticketed or admitted via pass.

STATE TOURNAMENT ADMISSION AND GATE INFORMATION

- ❖ Please note the timetable for the state wrestling tournament as published on the KHSAA web site, www.khsaa.org/wrestling.

❖ **Competitors and Coaches**

- The gates will open for the competitors and coaches ONLY at 8:30 a.m. on Thursday morning
- The gates will open for the competitors and coaches ONLY at 8:30 a.m. on Friday morning
- The gates will open for the competitors and coaches ONLY at 8:30 a.m. on Saturday morning.
- Only those competitors with PARTICIPANT tags and coaches with COACHING tags will be admitted until the general public gates open.
- It will be necessary for all coaches and team members to enter the arena in the rear of the building, off St. Clair Street. We thank you in advance for cooperating.

❖ **General Public**

- The gates will open for the general public at 11:30 a.m. on Thursday
- The gates will open for the general public at 9:30 a.m. on Friday
- The gates will open for the general public at 9:30 a.m. on Saturday.

❖ **Please inform your parents and non-competing squad members about this timetable. We are unable to secure the building and provide adequately enough for the safety of these individuals until the staff becomes available when the gates open.**

- ❖ We will be clearing the stands after the second session on Friday and after the fourth session on Saturday. Please make arrangements for your teams and non-competitors to have a place to stay during times the gym is not open.

COOLERS

- ❖ **Coolers can not be brought inside of the Farnham Dudgeon Arena.** Athletes will be admitted with their gym bags, and unless identified as a security concern, these bags will not normally be subject to search.
- ❖ For fans and other individuals, coolers and other things used to transport food may NOT be brought inside. If you have special requests, concession suggestions, etc., please contact T. Auxier (tauxier@aol.com) as he will be responsible for the concession stand and has agreed to assist in identifying anything needed for the athletes. Please keep in mind that this is an Association ruling, not Frankfort High, and is necessary for insurance and liability reasons.

PARKING AND ARENA ENTRY

- ❖ Buses dropping students at the arena should proceed down Clinton Street (the one-way street which is on the side of the arena between the arena and downtown Frankfort). Beside the arena, spaces will be blocked to allow a bus to drop off student participants. They will then go around the building to the back (St. Clair Street side) and enter.
- ❖ For fans coming via bus, that entry will be via the Holiday Inn end of the arena and proceed to the ticketing areas.
- ❖ After buses unload, they will proceed to St. Clair Street (behind the arena), turn left, proceed to Mero Street, turn left, and return to the parking area that is bounded by US60.
- ❖ The bus driver can then be readmitted through the pass gate at the end of the arena near St. Clair Street (opposite the Holiday Inn).

STATE TOURNAMENT ADMISSION FOR TEAM PARTY

- ❖ Participants
 - Competitors entered into the tournament will receive a participant credential, including the regional 5th place finisher (alternate).
 - Any participant who loses his/her credential will be fined \$10 for the issuance of a replacement credential. It is the responsibility of the student-athlete to keep track of this pass
- ❖ Coaches
 - Each school will receive two coaching passes for admission for use by the coaches. Upon entry into the gym, these passes will be altered to prevent re-use, and the coach will be identified for re-entry during the session.
 - Each school with more than two wrestlers entered in the tournament may purchase two additional passes for coaches. These will be priced at \$18 per coach. These may be purchased in advance from the Association (on provided forms prior to February 18, 2009) or they must be purchased at the Thursday morning check-in session from 8:30 a.m. to 10:00 a.m.

- Upon entry into the gym, these passes will be altered to prevent re-use, and the coach will be identified for re-entry during the session.
- There will be no replacement for lost coaching passes.
- Mat side credentials are required to be worn at ALL times when inside the Farnham Dudgeon Arena in the Frankfort Convention Complex.
- ❖ Non State Meet Participants
 - Schools may purchase additional team party full session tickets. These may be purchased in advance from the Association (on provided forms prior to February 18, 2009) or they must be purchased at the Thursday morning check-in session from 8:30 to 10:00 a.m. and may be purchased for the following individuals:
 - Any wrestler on the eligibility list who has competed for your school during the regular season.
 - Your team support personnel including managers, cheerleaders (mat maids).
 - This Team Support Ticket will only admit the holder while in uniform or easily identified as being with the school.
 - This is not intended as a means to allow your student supporters and adult fans to receive discounted admission. These individuals should be directed to the ticket window.
 - These tickets are to be sold at \$18.00 per ticket.

ATHLETES UNABLE TO COMPETE

- ❖ Should a school have an athlete finish 1-4 in the region and he/she is unable to compete in the state tournament due to schedule conflicts, injury or other documented reason, school representatives shall notify the KHSAA by noon on Wednesday, February 18. Failure to properly notify the Association of such a withdrawal will result in a penalty against the school in accordance with KHSAA Bylaw 33.
- ❖ In the case of an athlete being unable to enter and being replaced, the remainder of the bracket will be "rolled-up", and the replacement wrestler seeded fourth.
- ❖ If a bracket position is vacated and unable to be filled by an alternate from the region, the option will roll in random order to another region. The random order will be determined and announced by the Association and posted on the web site. That link is at <http://www.khsaa.org/wrestling/randomrolluptable.pdf>
- ❖ Coaches are advised to weigh-in any fifth place regional wrestler in case of replacement the day of the tournament.

PRE-TOURNAMENT MEETING

- ❖ There will be a mandatory coaches meeting at 10:30 a.m. on Thursday, February 19, in the Civic Center. Association expectations for the tournament and other relevant issues will be discussed.
- ❖ Immediately following the pre-tournament meeting, there will be a short meeting of the Kentucky Wrestling Coaches Association.

TEAM EXPENSES FOR STATE MEET

- ❖ SCHOOLS ARE RESPONSIBLE FOR PAYING FOR THEIR OWN EXPENSES TO THE STATE TOURNAMENT.

ENTRIES AND RESULTS

- ❖ The base draw by position will be posted to the KHSAA web site, <http://www.khsaa.org/wrestling>, after 11 p.m. on Saturday, February 14.
- ❖ The draw will be a blind draw with the 1st place from each region drawing a 4th place from another region. These first place competitors cannot draw the 4th from their own region, nor can they be placed in the same bracket with the runner-up from their region. These 2nd place competitors cannot draw the 3rd from their own region.
- ❖ As soon as possible and practical, the regional results and state tournament entries will be up on the KHSAA web site, <http://www.khsaa.org/wrestling> and we will also put the results of the state meet up as soon as possible afterwards. Plans are to have the individual brackets posted by Tuesday at noon. This site will also be linked to the Kentucky Wrestling Coaches Association (www.kentuckywrestling.org) web site provided the site administrator cooperates. Schools will be notified by electronic mail when this information is posted and current.

OFFICIAL SCALES AND WEIGH-INS

- ❖ Scales will be available for all entered Wrestlers/Teams wishing to check weight from 8:00-10:00 PM ONLY on Wednesday, February 18, 2009 at the Holiday Inn Capital Plaza. The Kentucky Wrestling Coaches Association is providing this service.
- ❖ Each weight class will not receive any additional growth allowance after the regional tournament.
- ❖ Each weight class will have a one-pound growth allowance added after each day of state competition.
- ❖ DAY ONE
 - Officials will be in the building and assume jurisdiction at 9:30 a.m.
 - The official weigh-ins will begin at 11:00 a.m. on Thursday morning, February 19 and will end following the weighing of the last 285/287 pound competitor.
 - In accordance with the playing rules, the scale will close for each weight class when the first competitor of the succeeding class weighs in.
 - The scales WILL CLOSE PROMPTLY after the last 285/287 person weighs in.
 - Make sure your travel plans coincide with this schedule.
 - In accordance with National Federation Rules, all athletes should be prepared to weigh-in at 11:00 a.m.
- ❖ DAY TWO
 - The official weigh-ins will begin at 9:00 a.m. on Friday morning, February 20.
 - In accordance with the playing rules, the scale will close for each weight class when the first competitor of the succeeding class weighs in.
 - The scales WILL CLOSE PROMPTLY after the last 285/287 person weighs in.
 - Make sure your travel plans coincide with this schedule.
 - In accordance with National Federation Rules, all athletes should be prepared to weigh-in at 9:00 a.m.
- ❖ DAY THREE
 - The official weigh-ins will begin at 9:00 a.m. on Saturday morning, February 21.
 - In accordance with the playing rules, the scale will close for each weight class when the first competitor of the succeeding class weighs in.
 - The scales WILL CLOSE PROMPTLY after the last 285/287 person weighs in.
 - Make sure your travel plans coincide with this schedule.
 - In accordance with National Federation Rules, all athletes should be prepared to weigh-in at 9:00 a.m.
- ❖ Official scales for checking weight will also be available at ALL times during the tournament sessions.
- ❖ An alternate set of scales will also be available at this time to weigh-in any alternates.

SCHOOL REPRESENTATIVES

- ❖ You are reminded that KHSAA Bylaw 20 requires a member of the faculty of the school to be present along with any student-athlete who is representing a member school. Please see Bylaw 20 in the 2008-09 KHSAA Handbook if you have any questions. Each school will be required to verify the presence of this school person upon entering the state tournament by turning in form WR119 at the morning meeting.
- ❖ Each school may apply for a school media credential for the purpose of reporting the events and for taking pictures for yearbooks, newspapers, etc. by using KHSAA Form SI101. Persons issued a credential for this purpose will not be permitted on the mats, but will be given complimentary admission.

HOSPITALITY ROOM

- ❖ There will be a light hospitality room during the tournament, and we plan on having drinks available all of the time. Schools are encouraged to make advance plans for between session meals and breaks. Coaches must show a valid credential from the tournament to enter the hospitality room. **DUE TO INCREASED SECURITY CONCERNS, NO COOLERS WILL BE ALLOWED TO BE BROUGHT INTO THE CIVIC CENTER.**

AWARDS

- ❖ Trophies and Awards will be given to the top four (4) teams, and to the top eight (8) individuals in each weight class.
- ❖ Make sure any of wrestlers placing in the "Top Eight" in each of the Fourteen Individual Weight Classes remain in Wrestling Uniforms and/or school issued or identifiable clothing for the Award Presentations & Pictures.

- ❖ Wrestlers placing in the top eight (8) places should report to the floor area immediately following the conclusion of the championship bout in the athlete's weight class.
- ❖ Participation in the awards ceremony is NOT optional and is an expectation for entering the tournament.
- ❖ Please cooperate in our efforts to present ourselves in the best possible manner.

SCOREBOARDS

- ❖ Again this year, we have been able to secure four score clocks for the tournament. Their inclusion makes the tournament more enjoyable for coaches, wrestlers, and fans alike and we sincerely appreciate the advertisers who make their usage possible.
- ❖ We will again make every effort to keep results posted on the video board in the end zone.
- ❖ In addition, we continue to try to put out results quickly via the internet at (<http://www.khsaa.org/wrestling>).
- ❖ For the consolation and championship finals, the host arena has purchased a scoreboard which will accommodate the needs of wrestling.

BRACKETS

- ❖ Each school is being supplied a set of brackets for the tournament per day. A ticket will be issued good for that set of brackets.
- ❖ For the first day, the brackets will be available by redeeming one of the bracket tickets (enclosed in the coaching packet) at the program sales table.
- ❖ For each subsequent day of the tournament, you will need a ticket (enclosed in the coaching packet) to receive a copy of the brackets at the program sales table. Details will be given at the coach's meeting.
- ❖ Additional copies are available for \$3.00 at the program sales booth.

SUMMARY

Thanks to all of you in advance for your much needed cooperation and efforts in making our Kentucky State Wrestling Tournament such a great success year after year! We look forward to another year at the Farnham Dudgeon Arena in the Frankfort Convention Complex. The Center is a beautiful arena and facility, with a seating capacity of 5,365. We anticipate a larger crowd than ever before in our entire 45-year history. This great facility has offered us an opportunity to really "SHOWCASE" the KENTUCKY STATE WRESTLING CHAMPIONSHIPS. The arena staff has been planning for months to make things even better than last year. We accept and intend to meet the challenge, making this year's 2009 Kentucky State Wrestling Championships the most successful we have ever had! We again look forward to this year's tournament with great anticipation and enthusiasm!



APPENDIX A – FORMS NEEDED FOR ALL WRESTLING SCHOOLS

REQUIRED FORMS FOR ALL SCHOOLS

WR111 – This form is the required skin-condition form. Please make certain you have this completed for any athlete who has even the most remote chance of being viewed by an opposing coach or the official as being contagious to others.

No other form of note is to be accepted by the officials. This form is available at

<http://www.khsaa.org/forms/wr111.pdf> or <http://www.khsaa.org/forms/wr111.doc>.

WR119 – This form is to be used for the State Tournament, and will be turned in on the first morning of the tournament to verify that the school is in compliance with state transportation requirements regarding the transportation of

athletes. This form is available at <http://www.khsaa.org/forms/wr119.pdf> or <http://www.khsaa.org/forms/wr119.doc>.

WR120 – This form is to be completed for any individuals for which you desire to purchase discounted admission for the entire tournament. See further instructions for eligibility. This form is available at

<http://www.khsaa.org/forms/wr120.pdf> or <http://www.khsaa.org/forms/wr120.doc>

OPTIONAL FORMS ONLY FOR ELECTRONIC FAILURE

WR110 – Weigh-in verification form – This form should have been used throughout the year to verify weigh-ins at each match. This form is available at <http://www.khsaa.org/forms/wr110.pdf> or <http://www.khsaa.org/forms/wr110.doc>.

WR109 – Weigh-in verification – This is an optional form that could be used to track an individual wrestler's weigh-in patterns. This form is available at <http://www.khsaa.org/forms/wr109.pdf> or <http://www.khsaa.org/forms/wr109.doc>.

WR117 – Entry Form – This is the only form which may be utilized to enter wrestlers into the tournament series. On the form, managers are to get your wrestler's names, grade, and weight. The managers is also to verify the fact that the scratch weight including growth allowance at the desired entry class was made and what the last date was that the weigh-in was accomplished at the weight on or before January 31. The other columns are for you to list how many weigh-ins each wrestler has for the year, and how many weigh-ins the wrestler has in the entered class. **NO ONE HAS THE AUTHORITY (INCLUDING KHSAA) TO WAIVE THE BASE WEIGH-IN REQUIREMENT.** Blank copies are at

<http://www.khsaa.org/forms/wr117.doc> or <http://www.khsaa.org/forms/wr117.pdf>.



KENTUCKY HIGH SCHOOL ATHLETIC ASSOCIATION

KHSAA Form WR111
Rev. 9/08

This is the only form a referee will accept as "current written documentation" that a skin condition is not communicable.

WRESTLING SKIN CONDITION AND UNCONSCIOUS REPORT

COPY AND RETAIN THIS ORIGINAL FORM FOR FUTURE USE.

_____ from _____ : Date of Exam ___ / ___ / ___
Wrestler's Name (Print or Type) High School Name (Print or Type)

_____ has been examined by me due to a skin condition.

Diagnosis _____

Location of Lesion(s) _____

Medication(s) used to treat lesion(s): _____

Date Treatment Started: ___ / ___ / ___

Form Expiration Date: **Seven Days from Signature of Provider**

Earliest Date may return to participation: ___ / ___ / ___

_____ has been examined by me following being rendered unconscious or nearly unconscious.

This person may return to contact action participating in wrestling.

RETURN TO PARTICIPATION TIME FRAME/COMMENTS:

Physician Name (Printed or Typed) _____
Provider Signature (M.D. or D.O.) _____
Office Phone #: _____
Office Address _____

Note to Providers: Non-contagious lesions do not require treatment prior to return to participation (e.g. eczema, psoriasis, etc.). Please familiarize yourself with NFHS Rules 4-2-3 and 4-2-4 which states:

"ART. 3 . . . If a participant is suspected by the referee or coach of having a communicable skin disease or any other condition that makes participation appear inadvisable, the coach shall provide current written documentation as defined by the NFHS or the state associations, from a physician stating that the suspected disease or condition is not communicable and that the athlete's participation would not be harmful to any opponent. This document shall be furnished at the weigh-in for the dual meet or tournament. The only exception would be if a designated on-site meet physician is present and is able to examine the wrestler immediately after the weigh-in. Covering a communicable condition shall not be considered acceptable and does not make the wrestler eligible to participate."

"ART. 4 . . . If a designated on-site meet physician is present, he/she may overrule the diagnosis of the physician signing the physician's release form for a wrestler to participate with a particular skin condition."

"ART. 5 . . . A contestant may have documentation from a physician only indicating a specific condition such as a birthmark or other non-communicable skin conditions such as psoriasis and eczema, and that documentation is valid for the duration of the season. It is valid with the understanding that a chronic condition could become secondarily infected and may require re-evaluation."

Below are some treatment guidelines that suggest **MINIMUM TREATMENT** before return to wrestling:

Bacterial diseases (impetigo, boils): Oral antibiotic for two days and no drainage, oozing, or moist lesions.

Herpetic Lesions (Simplex, fever blisters/cold sores, Zoster, Gladiatorum): To be considered "non-contagious," all lesions must be scabbed over with no oozing or discharge and no new lesions should have occurred in the preceding 48 hours. For primary (first episode of Herpes Gladiatorum), wrestlers should be treated and not allowed to compete for a minimum of 10 days. If general body signs and symptoms like fever and swollen lymph nodes are present, that minimum period of treatment should be extended to 14 days. Recurrent outbreaks require a minimum of 120 hours or five full days of oral anti-viral treatment, again so long as no new lesions have developed and all lesions are scabbed over.

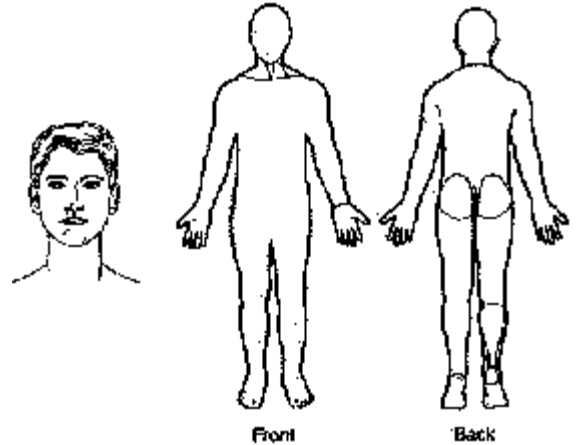
Tinea lesions (ringworm scalp, skin): Oral or topical treatment for 72 hours on skin and 14 days on scalp.

Scabies, Head Lice: 24 hours after appropriate topical management.

Conjunctivitis (pink eye): 24 hours of topical or oral medication and no discharge.

Molluscum Contagiosum: 24 hours after curettage.

NOTE TO PROVIDERS: If your examination yields a finding that the wrestler has a contagious skin condition within these rules, no covering of such condition will allow the athlete to wrestle.





**KENTUCKY HIGH SCHOOL ATHLETIC ASSOCIATION
SCHOOL DECLARATION FORM**
(make additional copies if necessary)

KHSAA Form WR119
Rev. 1/99

SCHOOL: _____

Bylaw 20. Member of the Faculty to Accompany Team

The principal or coach or another member of the faculty shall accompany the team to all contests. His/her expenses, when he/she accompanies the contestants, shall be paid in the same manner as those of the contestants.

Q/A -1 Is the restriction on transportation of a student by the principal, coach or faculty a KHSAA regulation or state law? This bylaw is patterned and adopted after KRS 161.185 which states "Boards of education shall require a principal, coach, member of the faculty or a member of the administrative staff to accompany students on all school-sponsored or school-endorsed trips." Effective July 15, 1998, the legislature changed the provisions to give those individuals employed as Level II or III coaches the same authority as their faculty counterparts if approved by the local Board of Education.

Q/A 2 - Can a nonteaching paraprofessional accompany a team and/or drive the bus or van? Yes, that person can serve as the person to accompany the team in accordance with KRS 161.185 as amended by the Legislature effective July 15, 1998. It should be noted that this in no way removed or revised the requirements for the driver of the bus / van as that individual must continue to meet other state requirements.

In accordance with this bylaw, the person listed below has been approved by the Board of Education of this school to serve as the person accompanying this team and is accompanying the athletes for this tournament.

Signature _____

Person to Accompany Team _____

School Affiliation/Position _____

Date _____

THIS FORM MUST BE COMPLETED PRIOR TO AN ATHLETE BECOMING A COMPETITOR AT THE REGIONAL OR STATE TOURNAMENT.



MEMBER SCHOOL DISCOUNT ADMISSION REQUEST

SCHOOL: _____ COACH: _____

REQUEST FOR ASSISTANT COACH TICKETS. Each school will be supplied two, and two more may be purchased if the school has wrestlers in consecutive weight classes where additional coaches would be required.	
<i>NAMES (MUST BE SUPPLIED)</i>	

REQUEST FOR TEAM SUPPORT TICKETS (Formerly Mat Maids), MUST BE IN SCHOOL IDENTIFIABLE CLOTHING TO GET DISCOUNTED ADMISSION. This can be mat maids, other coaches, drivers, and eligible members of the team who did not qualify for the tournament. This pass is not for parents and fans.	
<i>NAME (OPTIONAL FOR THESE PASSES)</i>	
Total Passes Ordered	
X \$18	
Total Due	

I certify that the listed individuals meet the criteria for the discounted purchase					
Signature					
School and Position					
Date					
Credit Card #		Expire		Check Number	



**OPTIONAL MATCH/TOURNAMENT WEIGH-IN
VERIFICATION LOG – USE ONLY WHEN NWCAONLINE
WILL NOT FUNCTION**

KHSAA Form WR110
Rev. 10/07

(use one form per squad per event entered)

DATE _____

SCHOOL _____

EVENT _____

COACH (PRINT) _____

REFEREE (PRINT) _____

OPPOSING COACH (PRINT) _____

	Name of Wrestler	Weight	Class	Signature of Wrestler (Optional)
103 / 105				
112 / 114				
119 / 121				
125 / 127				
130 / 132				
135 / 137				
140 / 142				
145 / 147				
152 / 154				
160 / 162				
171 / 173				
189 / 191				
215 / 217				
275 / 277				
EXTRAS				

COACH (SIGNATURE) _____

REFEREE (SIGNATURE) _____

OPPOSING COACH (SIGNATURE) _____



REGION WRESTLING TOURNAMENT
 Optional Entry Form – Only to be used in the case that
 NWCAONLINE is unavailable
 (use one form per squad)

KHSAA Form WR117
 Rev. 1/07

SCHOOL: _____

DATE: _____ EVENT: _____

COACH (PRINT): _____

COACH EMAIL (for verification) _____

COACH HOME PHONE (in case of problems with names, etc.) _____

COACH CELL PHONE (in case of problems with names, etc.) _____

Class	Name of Wrestler	Grade	Minimum Certified Weight on region date (from NWCA system)	Scratch Weight (including growth) date (on or before-1/26)
103 / 105				
112 / 114				
119 / 121				
125 / 127				
130 / 132				
135 / 137				
140 / 142				
145 / 147				
152 / 154				
160 / 162				
171 / 173				
189 / 191				
215 / 217				
285 / 287				

Alternates must be entered from the NWCA listing with weight testing, and weigh-in verification forms

COACH (SIGNATURE): _____



**APPENDIX B –
KHSAA STATE
TOURNAMENT TIME
TABLE**



KENTUCKY HIGH SCHOOL ATHLETIC ASSOCIATION
STATE WRESTLING CHAMPIONSHIPS
February 19-21, 2009
Frankfort Convention Center, Frankfort, KY

WEDNESDAY, FEB. 18

1:00 to 5:00 p.m.
7:00 to 9:00 p.m.
8:00 to 10:00 p.m.

Arena setup, no participants or coaches allowed in Civic Center
Western Hills High School, Workout opportunity available
Certified Scales Open, Capital Plaza Hotel
No OTHER ACTIVITY SCHEDULED
Officials Meeting, Capital Plaza Hotel

8:00 p.m.

THURSDAY, FEB. 19

Session 1

8:30 a.m.
SUBJECT TO CHANGE
8:30 a.m. to 10:00 a.m.
10:30 a.m. to 11:30 a.m.
11:00 a.m.
11:30 p.m.

The gates will open for the competitors and coaches. Only those competitors with PARTICIPANT tags and coaches with COACHING tags will be admitted until the general public gates open.
Pick-up/Purchase All-Session Tickets for Teams, Packets Available for Teams
Coaches Meeting, Frankfort Convention Center; Packets Available for Teams
Official Weigh-ins
Gates Open for Fans
NO ONE WITHOUT PARTICIPANT/COACH/WORKER PASS ALLOWED IN ARENA UNTIL THIS TIME
Assemble in Back Lobby for Opening Ceremony
First Round (224 matches, bouts 1-224)
Second Round Championship Bracket, Weight Classes 103/105 through 140/142, (bouts 225-280)

12:00 p.m.

12:30 p.m.- 8:00 p.m.

FRIDAY, FEB. 20

Session 2

8:30 a.m.

The gates will open for the competitors and coaches. Only those competitors with PARTICIPANT tags and coaches with COACHING tags will be admitted until the general public gates open.

9:00 a.m.

Official Weigh-ins (1 pound growth from day one)

9:30 a.m.

Gates Open for Fans & Competitors

10:00 a.m.

Remainder of Second Round Championship Bracket, Weight Classes 145/147 through 285/287 (112 matches, bouts 280-336)

* to conclusion

First Round Consolation Bracket (112 matches, bout numbers 337-448)

* to conclusion

Second Round Consolation Bracket (112 matches, bouts 449-560)

* to conclusion

Third Round, Championship Bracket (56 matches, bouts 561-616)

* to conclusion

Third Round Consolation Bracket (56 matches, bouts 617-672)

* - Time is estimated, round will begin IMMEDIATELY following preceding round

SATURDAY, FEB. 21

Session 3

8:30 a.m.

The gates will open for the competitors and coaches. Only those competitors with PARTICIPANT tags and coaches with COACHING tags will be admitted until the general public gates open.

9:00 a.m.

Official Weigh-ins (1 pound growth from day two)

9:30 a.m.

Gates Open for Fans & Competitors

10:00 a.m.

Fourth Round Consolation Bracket (56 matches, bouts 673-728)

* to conclusion

Fourth Round Championship Bracket (semifinals) (28 matches, bouts 729-756)

* to conclusion

Fifth Round Consolation Bracket (28 matches, bouts 757-784)

* to conclusion

Sixth Round Consolation Bracket (28 matches, bouts 785-812)

App. 3:00 p.m.

Consolation Bracket Finals (3 mats, simultaneous 7-, 5-, 3-)

* to conclusion

Seventh Round Consolation Bracket (7- place) (14 matches)

use three mats, wrestle simultaneous, hold start of next class for all complete

Eighth Round Consolation Bracket (5- place) (14 matches)

Ninth Round Consolation Bracket (3- place) (14 matches)

6:30 p.m.

Setup Final Mats and Presentation Platform
State Championship Opening Ceremonies
National Anthem
Introduction of Finals Competitors

7:00 p.m.

Championship Bracket Finals (1 mat) 14 matches)
Award Presentations Following Each Bracket Final

* - Time is estimated, round will begin IMMEDIATELY following preceding round



**APPENDIX D –
KHSAA WRESTLING SITE
SELECTION PLANS AND
PLACEMENTS**



WRESTLING POST SEASON SITE SELECTION PLANS

	REGION – TEAMS	Region 2008	Region 2009	Region 2010	Region 2011	Region 2012	Region 2013	Region 2014	Region 2015
2/08	REGION 1 - (WESTERN KENTUCKY) – Apollo, Caldwell County, Calloway County, Christian County, Daviess County, Fort Campbell, Hopkinsville, Ohio County, Paducah Tilghman, Union County, University Heights	Calloway County	Apollo	Christian County					
2/08	REGION 2 - (MID KENTUCKY) – Anderson County, Central Hardin, Danville, Fort Knox, John Hardin, Larue County, Nelson County, North Hardin	North Hardin	Fort Knox	Anderson County	Central Hardin	Danville	John Hardin	Nelson County	Larue County
2/05	REGION 3 - (WEST JEFFERSON) – Bullitt Central, DeSales, Doss, Fairdale, Holy Cross (Louisville), Iroquois, Meade County, Pleasure Ridge Park, Southern, Valley, Western	Seneca / St. X at Hoops	Western	TBA	TBA				
2/05	REGION 4 - (CENTRAL JEFFERSON) - Atherton, Central, DuPont Manual, Kentucky School f/t Blind, Moore, Seneca, St. Xavier, Trinity (Louisville)	Seneca / St. X at Hoops	Moore	TBA	TBA	Waggener			
2/08	REGION 5 - (EAST JEFFERSON) - Ballard, Eastern, Fern Creek, Jeffersontown, Kentucky Country Day, North Oldham, Oldham County, South Oldham	North Oldham	Jeffersontown	Oldham County	South Oldham	North Oldham	Jeffersontown	Oldham County	South Oldham
2/08	REGION 6 - (NORTHERN KENTUCKY) – Bishop Brossart, Campbell County, Conner, Cooper, Dixie Heights, Holmes, Newport, Ryle, Scott, Simon Kenton	Ryle	Conner	Scot	Campbell County	Simon Kenton			
2/08	REGION 7 - (CENTRAL KENTUCKY) – Bourbon County, Bryan Station, Franklin County, Harrison County, Henry Clay, Lafayette, Madison Central, Montgomery County, Paul Dunbar, Tate Creek, Western Hills, Woodford County	Lafayette	Montgomery County	Paul Dunbar	Tate Creek	Western Hills	Woodford County	Bourbon County	Bryan Station
2/05	REGION 8 - (EASTERN KENTUCKY) - Ashland Blazer, Johnson Central, Lawrence County, Letcher County Central, McCreary Central, Oneida Baptist, Perry County Central, Pike County Central, Prestonsburg, Sheldon Clark, Wayne County, Whitley County	Johnson Central	Sheldon Clark	Wayne County	Letcher County Central	Johnson Central	Sheldon Clark	Wayne County	

* - Deferring of hosts will move directly to the next site in the rotation with the entire rotation advancing one year



APPENDIX E – KHSAA CURRENT MANAGERS AND INFORMATION

2009 Wrestling Regional Managers

Kenny Stone
Wrestling Coach
Region 1
Apollo HS
2280 Tamarack Rd.
Owensboro, KY 42301
(270) 993-0122 Work
(270) 771-4614 Fax
kenny.stone@daviess.kyschools.us(E)
Seeding Entry - Sat. Feb 7, 2009, 5pm., Ft. Campbell
Meet - Sat. Feb 14, 2009, Weigh ins 9:00am, start 10am, Apollo

Software Operator- Jim Lancaster, 270-498-3835
jlancaster@brymak.com
Mats - 2
Officials - 3
Officials - Rocky Durham, Larry Baker, Jacob Ragsdale

Jackie Prather
Co- AD
Region 2
Fort Knox HS
107 Missouri St. Bldg 7501
Fort Knox, KY 40121
(502) 624-8444 Work
(502) 624-5274 Fax
jacqueline.prather@am.dodea.edu(E)
Seeding Entry - Sun. Feb. 8, 2009, 2pm, Fort Knox
Meet - Sat. Feb. 14, 2009, Fort Knox

Software Operator - Jarvis Cullen
jarvisnky@insightbb.com, 270-300-0251

Mats - 3
Officials - 3
Officials - Cody Walls, John Mark Hutcheson, David McCamman

Scott Greenwald
Athletic Director
Region 3
Seneca HS
3510 Goldsmith Lane
Louisville, KY 40220
(502) 485-8876 Work
(502) 485-8174 Fax
scott.greenwald@jefferson.kyschools.us(E)
Seeding Entry - Thur. Feb 12, 2009, 6:30, Seneca HS
Meet - Sat. Feb. 14, 2009, Weigh ins 8:30am, start 10am, Hoops
12101 Sycamore Station Place, Louisville

Software Operator - Scott Greenwald, 502-296-4892

Mats - 6
Officials - 6
Officials - David Barnett, Chris Shaw, Jim Shaw, Sam Durbin, Garrett
Pikul, Joe Cattan

Scott Greenwald
Athletic Director
Region 4
Seneca HS
3510 Goldsmith Lane
Louisville, KY 40220
(502) 485-8876 Work
(502) 485-8174 Fax
scott.greenwald@jefferson.kyschools.us(E)
Seeding Entry - Thur. Feb 12, 2009, 6:30, Seneca HS
Meet - Sat. Feb. 14, 2009, Weigh ins 8:30am, start 10am, Hoops
12101 Sycamore Station Place, Louisville

Software Operator - Scott Greenwald, 502-296-4892

Mats - 6
Officials - 6
Officials - David Barnett, Chris Shaw, Jim Shaw, Sam Durbin, Garrett
Pikul, Joe Cattan

Scott Greenwald
Athletic Director
Region 5
Seneca HS
3510 Goldsmith Lane
Louisville, KY 40220
(502) 485-8876 Work
(502) 485-8174 Fax
scott.greenwald@jefferson.kyschools.us(E)
Seeding Entry - Thur. Feb 12, 2009, 6:30, Seneca HS
Meet - Sat. Feb. 14, 2009, Weigh ins 8:30am, start 10am, Hoops
12101 Sycamore Station Place, Louisville

Software Operator - Scott Greenwald, 502-296-4892

Mats - 6
Officials - 6
Officials - David Barnett, Chris Shaw, Jim Shaw, Sam Durbin, Garrett
Pikul, Joe Cattan

Jim Demler Tim Ruschell
AD/Wrestling Coach
Region 6
Ryle HS
10379 US 42
Union, KY 41091
(859) 384-5311 Work
(859) 384-5335 Fax
james.demler@boone.kyschools.us(E)
Seeding Entry - Wed. Feb. 11, 2009, 7pm, Ryle HS Room 139
Meet - Sat. Feb. 14, 2009, 9am, Ryle HS

Computer Operator - Pam Ruschell
pruschell@levi.com, 859-760-4977

Mats - 4
Officials - 4
Officials - Todd Cole, Eric Slugantz, Mark Shumate, DeAndre Florence

Chris McCoy
Wrestling Coach
Region 7
Lafayette HS
401 Reed Lane
Lexington, KY 40503
(859) 381-3192 Work
(859) 381-3199 Fax
(859) 509-6379 Cell
chris.mccoy@fayette.kyschools.us(E)
Seeding Entry - Sun. Feb. 8, 2009, 6pm, Lafayette HS
Meet - Sat. Feb. 14, 2009, Weigh ins, 8am, Montgomery County HS

Software Operator - Chris McCoy
chris.mccoy@fayette.kyschools.us, 859-509-6379

Mats - 4
Officials - 4
Officials - Jeremy Callen, Jeff Medley, Mike Ford, Griffin Meredith

2009 Wrestling Regional Managers

Robin Newsome
Athletic Director

Region 8

Sheldon Clark HS
HC 68 Box 810
Inez, KY 41224
(606) 298-3591 Work
(606) 298-5174 Fax
(606) 534-0765 Cell

robin.newsome@martin.kyschools.us(E)

Seeding Entry - Fri. Feb. 13, 2009, 7pm, Sheldon Clark HS
Meet - Sat. Feb. 14, 2009, Weigh Ins 8am, Sheldon Clark HS

Software Operator - Richard DeLong, 606-626-6223, Greg Crum,
606-626-9093

richard.delong@martin.kyschools.us,
greg.crum@martin.kyschools.us

Mats - 2

Officials - 3

Officials - George Keeney, Earl Hall, Tom Hardy

Sheldon Clark is currently without power due to high winds. If the power is not restored to the High School by Saturday, the regional site will change to Warfield Middle School, near the Sheldon Clark campus.

Julian Tackett

Assistant Commissioner

State Manager

KHSAA

2280 Executive Drive
Lexington, KY 40505
(859) 299-5472 Work
(859) 293-5999 Fax
(859) 543-8921 Home
(859) 229-3916 Cell

jtackett@khsaa.org(E)

State Tournament Manager

Jack Cline

State Manager

122 Roan Road

Versailles, KY 40383
(859) 873-5045 Home

jj.cline@yahoo.com(E)

State Tournament Assistant Manager

Michael Barren

Assistant Commissioner

State Manager

KHSAA

2280 Executive Drive
Lexington, KY 40505
(859) 299-5472 Work
(859) 293-5999 Fax
(859) 858-1776 Home
(859) 317-3300 Cell

mbarren@khsaa.org(E)

State Tournament Manager